

DECLASSIFIED

Authority 883078

Maps of Manika  
&

SURROUNDING AREA  
+

DECLASSIFIED

Authority 883078

DO NOT REMOVE FROM OFFICE  
OF CHIEF - INVESTIGATION BRANCH

Copyright-1948  
by  
CUNANAN & PASCUA

MIRANDA & SON  
434 España, Manila

I N D E X

- TAB A - District of Binondo
- B - District of Ermita
- C - District of Intramuros
- D - District of Malate
- E - District of Paco
- F - District of Pandacan
- G - District of Quiapo
- H - District of Sampaloc
- I - District of San Miguel
- J - District of San Nicolas
- K - District of Sta Ana
- L - District of Sta Cruz
- M - District of Tondo

# MAP OF MANILA

(BY DISTRICT)

All names of streets arranged in alphabetical order and with guide to locate them.

CHECKED AND CORRECTED 1948.

DECLASSIFIED

Authority 883078



•LEGEND•

- A - PROPOSED QUEZON MUNICIPAL (C.A. 18)
- B - MANSION HOUSE
- C - LAND REVENUE OFFICES
- D - HIGH WIND TEST BATAAN PERKS
- E - SIKANA EXTENSION
- F - DIMASALANG CROSS OVER QUEZON AVENUE
- G - B.P. SITE
- H - CIVIL/INTERMEDIATE ROAD
- I - PROPOSED ROAD TO RILALCAN
- J - MALACANAN PALACE
- K - BOUNDARY LINE



**CAPITAL CITY SITE**  
 TOTAL AREA 21,878 HECTARES  
 SCALE 1:50,000 N

M A N I L A B A Y



### RIZAL CITY

(DA / AY)

Information compiled from  
FRUITS & GULF AIR SERVICE  
TRAVEL BUREAU & ROUTING  
INFORMATION SERVICE

checked &  
corrected  
6 1948



# QUEZON CITY DILIMAN ESTATE

INFORMATION COMPILED FROM  
STATE & LOCAL SURVEY REASONS  
TRAVEL BUREAUS, INSURANCE  
SCHEDULES, ETC., CHECKED  
CORRECTED TO 1948



DECLASSIFIED  
Authority 5816 020 078

# NEW MANILA (QUEZON CITY)

INFORMATION COMPILED  
FROM PRIVATE & PUBLIC  
SOURCES THROUGH SURVEYS  
RECONSTRUCTION AND  
AERIAL PHOTOGRAPHS

checked  
& corrected  
to  
1948



CITY OF THE  
DIVINE WORD

DILIMAN

NEW MANILA

ROSARIO HEIGHTS

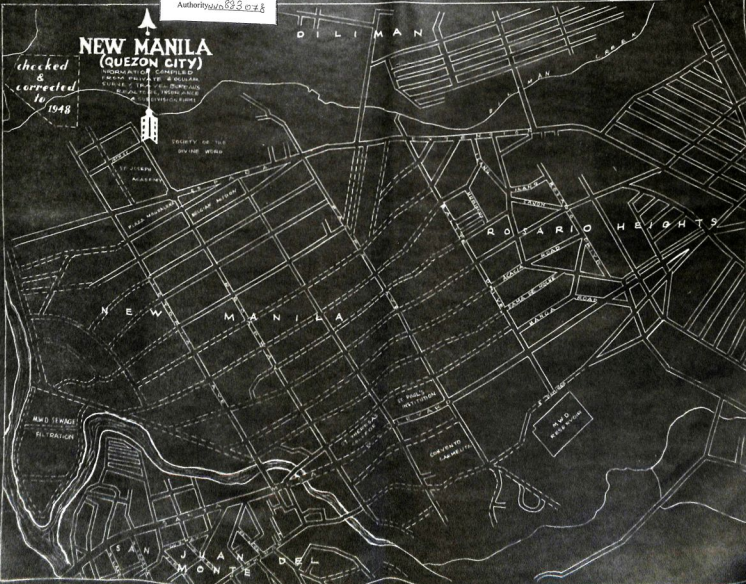
WATER  
TREATMENT  
PLANT

ST. PAUL'S  
WELLINGTON

CONVENTO  
SANTO ROSARIO

WATER  
TREATMENT  
PLANT

SAN JUAN DEL MONTE



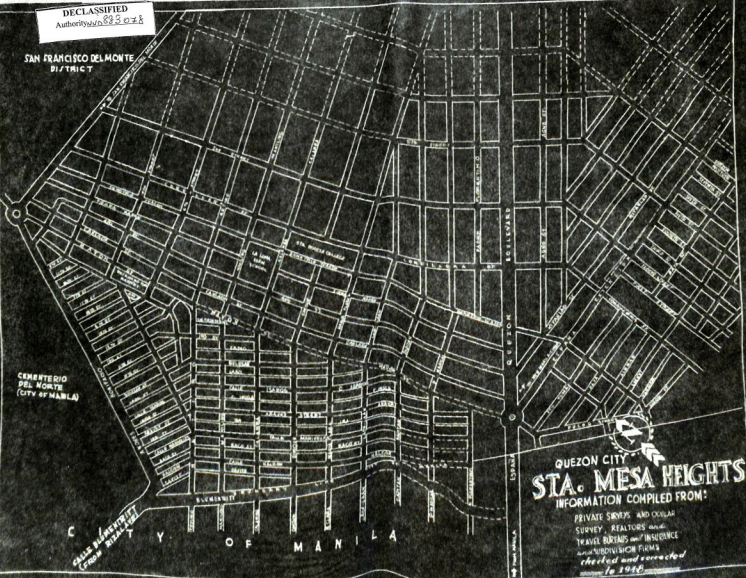


DECLASSIFIED  
Authority: 6883 078

SAN FRANCISCO DEL MONTE  
DISTRICT

CEMENTERIO  
DEL NORTE  
(CITY OF MANILA)

CITY OF MANILA  
C / BUREAU OF  
RIZAL AVE



QUEZON CITY  
**STA. MESA HEIGHTS**  
INFORMATION COMPILED FROM:  
PRIVATE SURVEYS AND OCCULAR  
SURVEY, REALTORS and  
TRAVEL BUREAUS and INSURANCE  
and SUBDIVISION FIRMS  
*checked and corrected*  
1948

# SAN JUAN DEL MONTE

INFORMATION COMPILED FROM  
*Private & confidential sources*  
*Realtors & Travel Bureau*  
*Insurers & Banks*  
*Telephone Directory*



CHECKED  
&  
CORRECTED  
4 1948

## SAN JUAN DEL MONTE

P. D. LARANGAN  
ADDITIONAL FIELD

SP. LUCIA  
SUBDIVISION

ST. CATHERINE'S  
ACADEMY

CITY OF  
MANILA

TIRO AL BLANCO

CITY OF  
MANILA

W. F. BUCK  
LITHO IN  
PHILIPPINES  
1948





SAN JUAN DEL MONTE

SANPALOC DISTRICT  
CITY OF MANILA

STA. ANA DISTRICT

MAKATI

THIS DISTRICT IS  
COMPOSED OF TWO SHEETS



SHEET A

# MANDALUYONG

INFORMATION COMPILED FROM:  
TRAVEL BUREAUS & PRIVATE  
SURVEY  
SECULAR SURVEY & REALTORS  
INSURANCE & SUBDIVISION FIRMS  
*checked & corrected to 1948*

DECLASSIFIED  
Authority: *14800.104*

BALINTAWAK

DECLASSIFIED  
Authority: 105-5-108

DUNAN



**SHEET-B  
MANDALUYONG**

• INFORMATION Compiled FROM  
TRAVEL BUREAU and PRIVATE  
SURVEY  
OCULAR SURVEY and REALTORS  
INSURANCE & SUBDIVISION FIRM  
checked & corrected to 1948

MCKINLEY

CAMP MURPHY  
& ROSARIO  
HEIGHTS



ROSARIO HEIGHTS EXTENSION

SCHOOL

RCA  
RADIO TOWER

MANILA HEIGHTS

CAMP MURPHY

CUBAO DISTRICT

MADALOYA ESTATE

DECLASSIFIED  
Authority: E.O. 13526

DECLASSIFIED  
Authority: 5830218

TINAJEROS

MANILA GOLF CLUB

LINKS

EL BALANAR AND MERCADO

BARANGAY

SANGANAPAN

FISH PONDS

DE KONSTANTINO HENRIQUEZ

CALOOCAN

# CALOOCAN & MAYPAJO

INFORMATION COMPILED FROM:

\*PRIVATE SURVEYS AND READINGS  
OCEAN SURVEY AND SUBDIVISION COMPANIES

\*CHECKED AND CORRECTED TO 1946



FISH PONDS

MARCELO VALERIANO "BOBO" TIBAY

GRACE PARK

MAYPAJO

COCOMO IS.

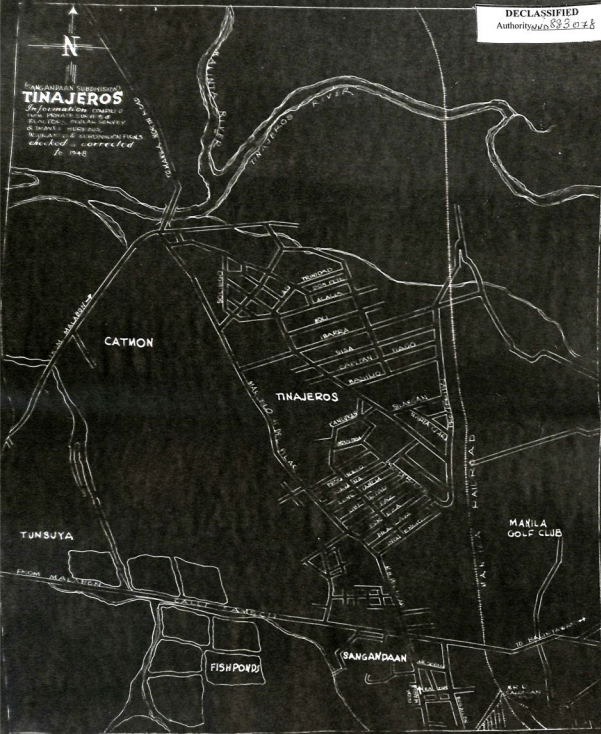
COCK PIT

OBRERO

BALUT IS.

AN ANTIEN SUBDIVISION  
**TINAJEROS**

Information compiled  
from records of the  
LAND OFFICE, MANILA, GENERAL  
OFFICE, and the  
RECORDS OF THE DISTRICT OFFICE,  
checked & corrected  
to 1948





DECLASSIFIED  
AUTHORITY: 6880.10A  
DATE: 03-03-2011

PROPOSED SITE OF  
ATENEO DE MANILA

BALINTAWAK

MAYSILLO ESTATE

**GRACE PARK**

INFORMATION CONTAINED HEREIN  
IS UNCLASSIFIED EXCEPT WHERE SHOWN  
OTHERWISE



CHECKED  
CORRECTED  
1946

**GRACE PARK**

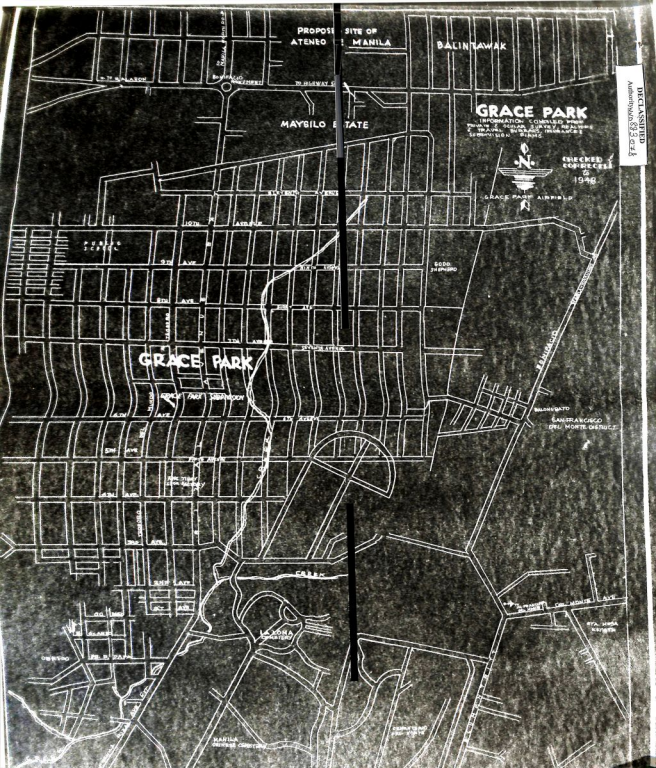
MANILA  
SAN FRANCISCO  
DR. MONTI GERRERO

CALERA

LATORIA

BARILE

ETA. 1944





DECLASSIFIED  
Authority: E.O. 13526

PINEDA

SAN NICOLAS

MARIQUINA RIVER

PASIG

MALINAO

BOTING

MARSH

SAN JOAQUIN

FORT WILLIAM  
MCKINLEY

PATEROS

CHURCH

STA. ANA

# PATEROS PASIG-STA. ANA

INFORMATION COMPILED FROM  
PRIVATE SURVEYS, TRAVEL  
BUREAU, REALTORS, INSURANCE FIRMS, SUBDIVISION FIRMS, CIGAR SPINNERS CHECKED AND  
CORRECTED TO  
1948



TIBA

DECLASSIFIED

Authority ND 633078

TULIHAN RIVER



**BALINTAWAK**

INFORMATION COMPILED FROM  
PRIVATE & PUBLIC SURVEY, REALTORS  
AND TRAVEL BUREAUS, RESUME  
A SUBDIVISION FINDER,  
checked & corrected  
to 1948

RIZAL AVENUE SUBDIVISION

MANILA GOLF CLUB

PROPOSED ATENEO  
DE MANILA

PAUL SAMSON

MAYFIELD  
P.O. BOX 178

BALINTAWAK

HIGHWAY 54 TO CR. BR.





NAVOTAS

MUZON

MALABON

NIOGAN

**MALABON**

Information compiled  
from reconnaissance and reconnaissance from  
private and official  
sources

CHECKED & CORRECTED

to 1948

TONSUYA



MALABON  
*See Sheet # 2*

M A N I L A  
B A Y

N A V O T A S  
P I V E R O

NAVOTAS

**NAVOTAS**

Information compiled from  
records and inspection of  
plans and records of  
title, survey and records

*edited  
and  
corrected*  
1958

DECLASSIFIED  
Authority 6880ZF8

MALIBAY

MARICABAN

BACLARAN

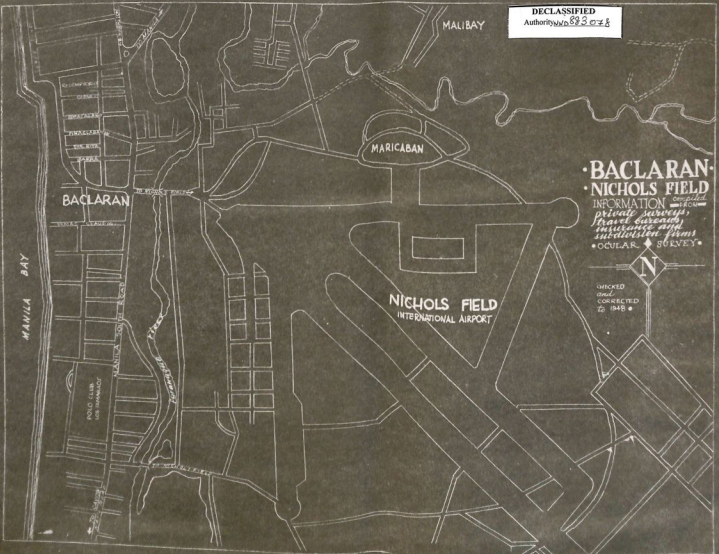
MANILA BAY

NICHOLS FIELD  
INTERNATIONAL AIRPORT

• **BACLARAN** •  
• **NICHOLS FIELD** •  
INFORMATION compiled FROM  
*private surveys,  
travel diaries,  
insurance and  
subdivision firms*  
• OCULAR SURVEY •



CHECKED  
AND  
CORRECTED  
IN 1948





DECLASSIFIED  
Authority 5010.003-028

BUENAVISTA SUBDIVISION  
**SAN ROQUE-NIELSON**

INFORMATION COMPILED FROM:  
PRIVATE & PUBLIC SURVEY  
INSURANCE, FIRE & SUBDIVISION  
TRADING, REAL ESTATE & TRAVEL  
BUREAU & CHANGES  
CORRECTED TO 1948



HACIENDA DE SAN PEDRO MAKATI  
AVILA & CIA

NIELSON AIRPORT



SAN RAFAEL  
(RIZAL CITY)

SAN ROQUE

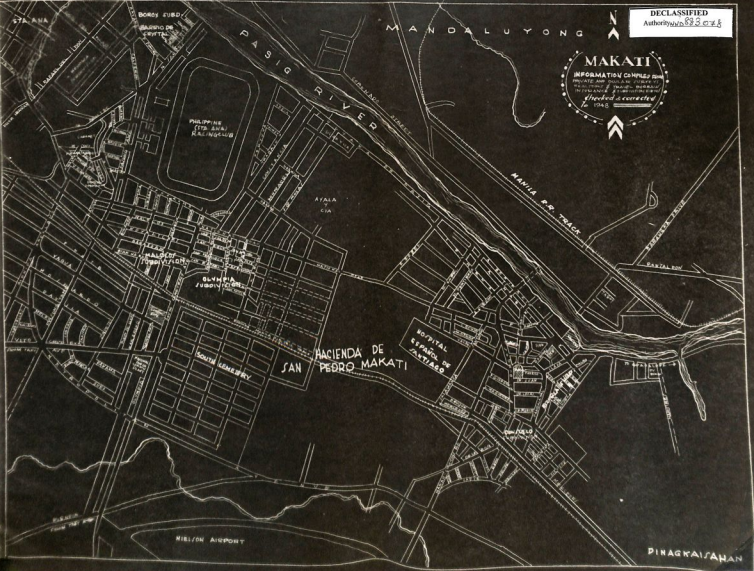
CULICULI

COCOR

BANCA

1/4 MILE  
1/2 MILE





MELTON AIRPORT

PIRAGKAI/ANAN

**• LEGEND •**

- A - PROPOSED QUEZON MUNICIPAL OFFICE
  - B - NATION HOUSE
  - C - LAND REVENUE OFFICES
  - D - MONUMENT FOR BATAAN HEROES
  - E - SIKANGA EXTENSION
  - F - DIMASALANG CROSS OVER QUEZON AVENUE
  - G - B.P. SITE
  - H - CIRCUMFERENTIAL ROAD
  - K - PROPOSED ROAD TO BULACAN
  - L - MALACANAN PALACE
- BOUNDARY LINE



**CAPITAL CITY SITE**  
 TOTAL AREA 21,878 HECTARES  
 SCALE 1:50,000 N

M A N I L A B A Y



**RIZAL CITY**  
(DAVAO)

Information compiled from  
PHOENIX & GUYAN SURVEY  
THOMPSON, BERRY & CO. REALTORS  
MIRANDA & CURTIS SURVEY

checked &  
corrected  
& 1948



# QUEZON CITY DILIMAN ESTATE

INFORMATION COMPILED FROM  
STATE REGULAR SURVEY REASONS,  
TRAVEL BUREAUS, INSURANCE  
CORPORATION FROM ENGINEER'S  
CORRECTED TO 1948





# NEW MANILA (QUEZON CITY)

INFORMATION COMPILED  
FROM PRIVATE & PUBLIC  
SOURCES THROUGH SURVEYS  
BY AIR, TRAIL, TOWN AND  
AERIAL PHOTOGRAPHY

checked  
& corrected  
to  
1948



COURTY OF THE  
DIVINE WORD

DILIMAN

MAN  
LAPPA

ST. JOSEPH  
ACADEMY

PLAZA MENDOZA

MICHAEL MITCHELL

ROSARIO HEIGHTS

NEW MANILA

WATER  
TREATMENT  
PLANT

ST. PAUL'S  
WELLINGTON

ST. MARY'S  
WELLINGTON

CONVENTO  
SANTO DOMINGO

W.P.O.  
BUILDING

SAN JUAN DEL MONTE

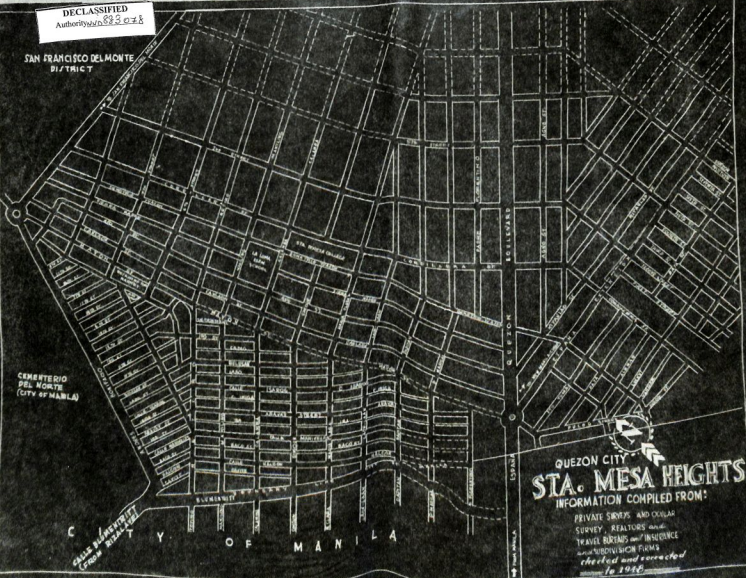


DECLASSIFIED  
Authority: 683038

SAN FRANCISCO DEL MONTE  
DISTRICT

CEMENTERIO  
DEL NORTE  
(CITY OF MABLA)

CITY OF MANILA  
CALLE BURENHEIT  
(FROM RIZAL AVE)



QUEZON CITY  
**STA. MESA HEIGHTS**  
INFORMATION COMPILED FROM:

PRIVATE SURVEYS AND OCULAR  
SURVEY, REALTORS and  
TRAVEL BUREAUS and INSURANCE  
and SUBDIVISION FIRMS  
*checked and corrected*  
November 1948



# SAN JUAN DEL MONTE

INFORMATION COMPILED FROM  
*Private & Public Sources*  
*Realtors & Travel Agents*  
*Insurers & A*  
*Sanitary & Health*



CHECKED  
&  
CORRECTED  
4 1948

## SAN JUAN DEL MONTE

P. D. SERRANO &  
P. D. ADDITION HILL

STA. LUCIA  
SUBDIVISION

ST. CATHERINE'S  
ALAMO

CITY OF  
MANILA

ESTRADA HILL

TIRO AL BLANCO

CITY OF  
MANILA FIRE BRIGADE

LAGUNA  
MADRIGAL  
PODOL

W. H. HICK  
C. H. H. H. H. H.



SAN JUAN DEL MONTE

SANPALOC DISTRICT  
CITY OF MANILA

STA. ANA DISTRICT

MAKATI

THIS DISTRICT IS  
COMPOSED OF TWO SHEETS



SHEET A

# MANDALUYONG

INFORMATION COMPILED FROM:  
TRAVEL BUREAUS & PRIVATE  
SURVEY  
SECULAR SURVEY & REALTORS  
INSURANCE & SUBDIVISION FIRMS  
*checked & corrected to 1948*

DECLASSIFIED  
Authority: *100-202025*

BALINTAWAK

DECLASSIFIED  
Authority/Id. 093018

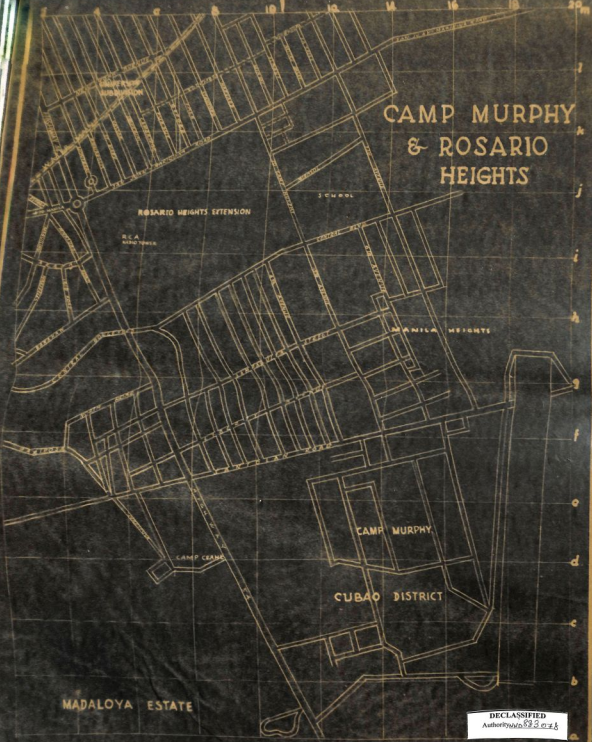
ANUNAN



**SHEET-B**  
**MANDALUYONG**

• INFORMATION Compiled FROM  
 TRAVEL BUREAU and PRIVATE  
 SURVEY  
 OCULAR SURVEY and REALTORS  
 INSURANCE & SUBDIVISION FIRM  
 checked & corrected to 1948

CAMP MURPHY  
& ROSARIO  
HEIGHTS



ROSARIO HEIGHTS EXTENSION

SCHOOL

RCA  
RADIO TOWER

MANILA HEIGHTS

CAMP MURPHY

CUBAO DISTRICT

MADALOYA ESTATE

DECLASSIFIED  
Authority: 6250.01

DECLASSIFIED

Authority: E.O. 13526

TINAJEROS

MANILA GOLF CLUB

LINKS

SANGANDAAN

FISH PONDS

CALOOCAN

# CALOOCAN & MAYPAJO

INFORMATION COMPILED FROM:  
-PROJECT SURVEYS AND REALTORS  
-CADAstral SURVEY and SUBDIVISION COMPANIES  
-CHECKED AND CORRECTED TO 1946

FISH PONDS

GRACE PARK

MAYPAJO

LOCOHO IS.

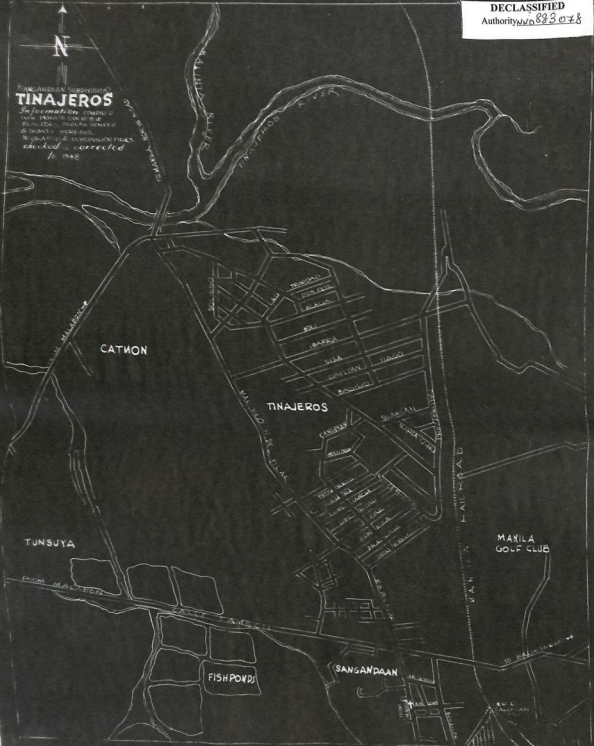
OBrero

BALUT IS.





SANGANDAAN SUBDIVISION  
**TINAJEROS**  
Information compiled by  
THE PHILIPPINE GEOGRAPHIC SERVICE  
AS DEPART. OF INTERIOR  
AND LOCAL GOVERNMENT FILES  
Checked & corrected  
to 1948





DECLASSIFIED  
Authority: 25 USC 552

DECLASSIFIED  
Authority: 6880.01  
DATE: 03/27/88



# PATEROS PASIG-ST.ANA

INFORMATION COMPILED FROM  
PLOTS, SURVEYS, TRAVEL  
BUCKLES, RECITALS, INS-  
URANCE FIRMS, SUBDIVIS-  
ION FORMS, CIVILIAN SER-  
VICE RECORDS, ETC.  
CORRECTED TO  
1948



DECLASSIFIED  
Authority E.O. 13526

TULAHAN RIVER



**BALINTAWAK**

INFORMATION COMPILED FROM  
PRIVATE & PUBLIC SURVEYS, REALTORS  
AND TRAVEL BUREAUS, INSURANCE

& SUBDIVISION FIRMS.  
checked & corrected  
in 1948

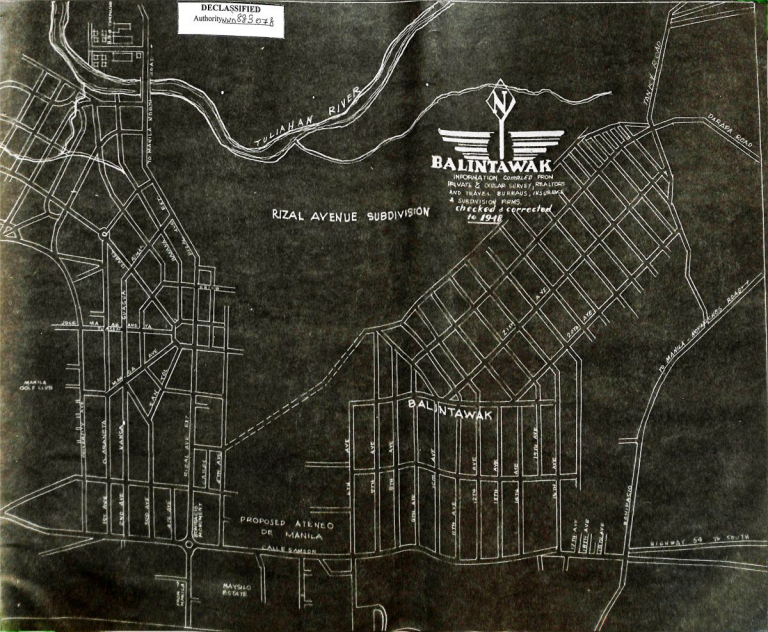
RIZAL AVENUE SUBDIVISION

BALINTAWAK

PROPOSED ATIENCO  
DE MANILA  
- LALE SAMSON

MAYSALO  
PIGGATE

Highway 54 to Co. 18





NAVOTAS

MUZON

MALABON

Tinajeros River

NIOGAN

**MALABON**

Information compiled  
from realtors, insurance  
and other sources from  
Philippine and other  
sources

CHECKED & CORRECTED

TO 1948

MANILA

BAY

TONSUYA

TO MANILA





MALABON  
*see sheet # 2*

MANILA BAY

NAVOTAS

NAVOTAS RIVER



### NAVOTAS

Information compiled from  
aerial and topographic maps  
and other sources showing  
streets, grounds and buildings.

*checked  
and  
corrected*  
10 FEBRUARY 1958

DECLASSIFIED  
Authority 5010 038

MALIBAY

MARICABAN

BACLARAN

NICHOLS FIELD  
INTERNATIONAL AIRPORT

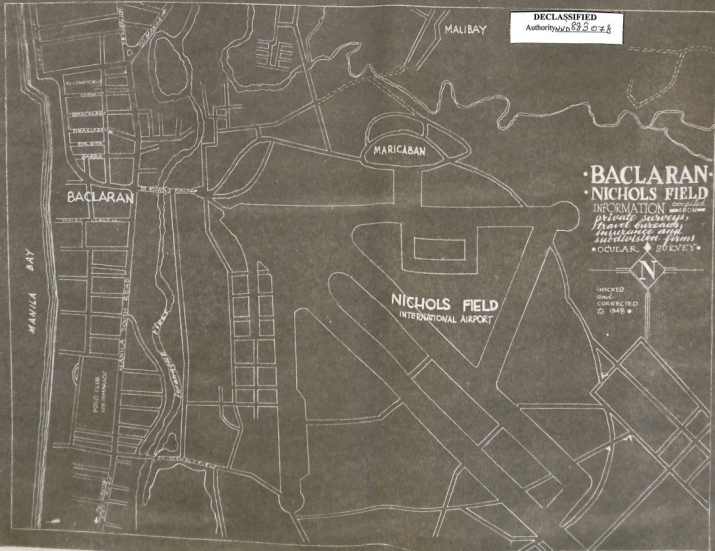
• **BACLARAN** •  
• **NICHOLS FIELD** •  
INFORMATION compiled  
*private surveys,  
travel surveys,  
insurance and  
subdivision firms*  
• OCULAR SURVEY •



CHECKED  
and  
CORRECTED  
TO 1948 •

MANILA BAY

POLO CLUB  
LOS MANANAY



DECLASSIFIED  
Authority 5010.108/3 of 78

BUENAVISTA SUBDIVISION  
**SAN ROQUE-NIELSON**

INFORMATION COMPILED FROM:  
PRIVATE & PUBLIC SURVEY  
INSURANCE, FIRE & SUBDIVISION  
TRADING, REALTORY & TRAVEL  
BUSINESS & CHANGES  
CORRECTED TO 1948



HACIENDA DE SAN PEDRO MAKATI  
AVILA & CIA

NIELSON AIRPORT



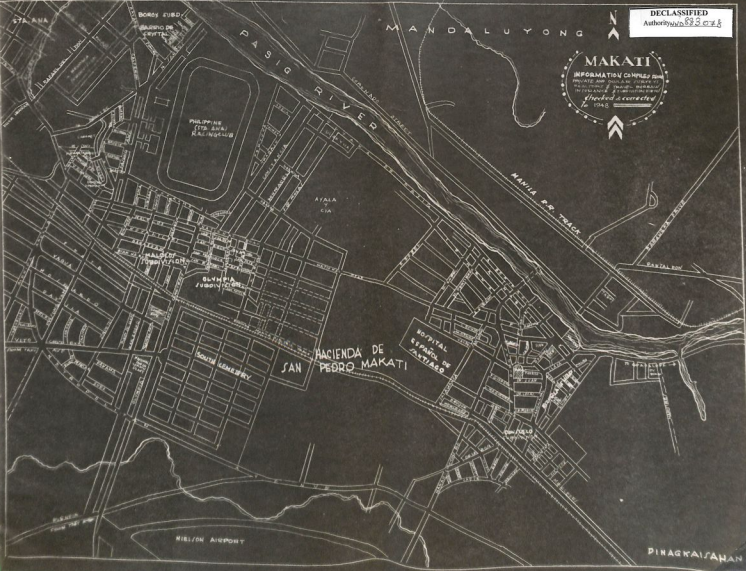
SAN RAFAEL  
(RIZAL CITY)

SAN ROQUE

CULICULI

BANCA

STANDARD MAPS COMPANY  
1100 PARK ST. (Corner 4th St. & Broadway)



STA ANA

BORDE SUBD

BARRO DE CRISTO

MANDALUYONG

PASIG RIVER

PHILIPPINE  
(TTB. SNA)  
RACING CLUB

AYALA  
CIA

MANILA-PASIG TRACK

MAJESTIC  
HOTEL

OLYMPIA  
Jockey Club

SOUTH KENNEDY

SAN HACIENDA DE PEDRO MAKATI

HOSPITAL  
ESPAÑOL DE  
SANTIAGO

NIELSON AIRPORT

PIRAGKAI/SAHAN



# ALL THE STREETS IN THE CITY OF MANILA

## HOW TO LOCATE A STREET

THE NAMES OF ALL THE STREETS IN THE CITY OF MANILA ARE ARRANGED IN ALPHABETICAL ORDER. THE ENTIRE CITY HAS BEEN DRAWN AND SEPARATED BY DISTRICTS. EACH DISTRICT HAS BEEN GRAPHED WITH LINES AS MARKED. TO LOCATE A STREET SAY, CALLE ESCOLTA, SEE LIST BELOW ON "E" ESCOLTA SAYS, BINONDO - PE; TURN SHEET BINONDO. THE FIGURE "P" STANDS FOR THE HORIZONTAL LINE AND THE LETTER "E" FOR THE VERTICAL LINE, YOU WILL SEE THE STREET AT THE INTERSECTION OF THESE LINES.

DECLASSIFIED  
Authority 863078

NAMES OF STREETS	DISTRICTS	LINE	NAMES OF STREETS	DISTRICTS	LINE	NAMES OF STREETS	DISTRICTS	LINE	NAMES OF STREETS	DISTRICTS	LINE
A. Bautista	Sta. Ana	10 K	Alvarado Extension	Tondo	12 E	Avilae	Sta. Miguel	6 C	Bautista	Sta. Ana	2 A
Abella	Malate	5 D	Alvarez	Sta. Cruz	5 G	A. Vitea	Sampaloc	7 D	Banan	Quiapo	2 B
A. R. Afacio	Intramuros	6 D	A. Mabini	Ermita	4 D	Ayala	Sta. Ana	5 I	Basta	Pandacan	6 D
Abucay	Tondo	13 O	Amatista	Sta. Ana	4 D	Ayala Blvd.	Ermita	5 I	Bastardo	Intramuros	7 E
Acacia	Sta. Miguel	5 B	Amorlanhagai	Tondo	8 G	Aserraga	Quiapo	8 G	Beltran	Tondo	8 F
Acate	Sampaloc	7 D	Amo Ng Bayan	Malate	8 G	Aserraga	Sta. Nicolas	9 J	Belen	Tondo	4 H
A. C. Herrera	Tondo	14 Q	Amplero	Tondo	8 O	Asisena	Sta. Ana	10 I	Begonia	Sta. Ana	10 I
Adela	Sta. Miguel	8 E	Anda	Intramuros	7 E	Bago	Sta. Cruz	9 C	Beravides	Tondo	13 D
Adelina	Sampaloc	1 E	Andalucia	Sta. Cruz	6 G	Bago	Sta. Cruz	7 L	Beranda	Binondo	5 I
Adon	Intramuros	6 F	Andres	Sta. Cruz	7 L	Bago	Sampaloc	6 J	Beranda	Sta. Cruz	9 C
Ado	Tondo	8 I	Antipolo	Sampaloc	5 L	Bago	Sta. Cruz	5 L	Berangaya	Tondo	8 Q
Adra	Sta. Ana	5 C	Antonio	Tondo	10E & 14K	Bago	Tondo	15 A	Bibao	Tondo	8 D
Adri	Malate	6 D	Antonio	Sta. Cruz	7 H	Bago	Quiapo	13 H	Bibid	Quiapo	6 G
Adriano	Sta. Miguel	6 C	Antonio	Sampaloc	1 J	Balagtas	Pandacan	5 E	Bilustritt	Sta. Cruz	7 H
Adriano	Malate	4 C	Antonio	Tondo	11 K	Balanga	Tondo	14 H	Bolinas	Sampaloc	5 Q
Adriano	Tondo	9 F	Antonio	Tondo	7 E	Balaya	Tondo	10 H	Bolinas	Sta. Cruz	4 K
Adriano	Binondo	5 K	Antonio	Tondo	11 E	Balayan (Ch)	Tondo	8 O	Bolinas	Sampaloc	10 I
Adriano	Tondo	8 D	Antonio	Malate	7 E	Balintawak	Tondo	11 E	Bolol	Tondo	12 Q
Adriano	Sta. Ana	5 D	Antonio	Sta. Cruz	7 I	Balones	Quiapo	7 B	Boston St.	Intramuros	1 C
Adriano	Tondo	8 O	Antonio	Sta. Ana	7 F	Baltesar	Tondo	8 G	Brillantes	Sampaloc	4 F
Adriano	Tondo	8 D	Antonio	Sta. Ana	2 B	Batanga	Tondo	12 F	Brixton Hill	Sampaloc	14 G
Adriano	Sta. Nicolas	4 E	Antonio	Sta. Ana	2 G	Batanga	Sta. Cruz	5 G	Buenos Aires	Sampaloc	11 F
Adriano	Tondo	9 L	Antonio	Sta. Nicolas	2 F	Batanga	Tondo	12 N	Buenos Aires	Sampaloc	11 F
Adriano	Sampaloc	5 G	Antonio	Ermita	4 F	Batanga	Tondo	8 O	Buenos Aires	Quiapo	4 H
Adriano	Sampaloc	9 G	Antonio	Quiapo	10 C	Batanga	Sta. Cruz	3 C	Buenos Aires	Sta. Miguel	8 D
Adriano	Sampaloc	3 F	Antonio	Tondo	7 B	Batanga	Tondo	7 F	Buenos Aires	Tondo	10 M
Adriano	Sta. Cruz	7 H	Antonio	Tondo	10 B	Batanga	Sta. Nicolas	3 F	Buenos Aires	Tondo	10 E
Adriano	Sampaloc	2 E	Antonio	Intramuros	6 D	Batanga	Quiapo	4 D	Buenos Aires	Sta. Ana	6 B
Adriano	Sampaloc	6 J	Antonio	Sta. Cruz	7 J	Batanga	Sta. Nicolas	7 E	Buenos Aires	Tondo	11 H
Adriano	Intramuros	6 F	Antonio	Sampaloc	1 J	Batanga	Sta. Ana	7 K	Buenos Aires	Sampaloc	3 F
Adriano	Tondo	13 J	Antonio	Sta. Nicolas	4 F	Batanga	Sampaloc	5 M	Buenos Aires	Sta. Cruz	4 B
Adriano	Ermita	3 E	Antonio	Sta. Cruz	6 E	Batanga	Sampaloc	11 J	Buenos Aires	Tondo	14 L
Adriano	Malate	3 F	Antonio	Sta. Nicolas	2 H	Batanga	Sta. Cruz	5 K	Buenos Aires	Sampaloc	3 F
Adriano	Binondo	4 J	Antonio	Sta. Ana	3 E	Batanga	Tondo	12 J	Buenos Aires	Sta. Cruz	4 B

NAME OF STREET	DISTRICT	LINE	NAME OF STREET	DISTRICT	LINE	NAME OF STREET	DISTRICT	LINE	NAME OF STREET	DISTRICT	LINE
Caballero	San Nicolas	4 G	Corraera	Tondo	8 H	Doniaga	Malate	8 B	Estero de Quiapo	Quiapo	9 A
Caobas	Tondo	10 H	Carola (Ch)	Sampaloc	3 J	Dugat	Sampaloc	7 E	Estero dela Peiza	Sta. Cruz	3 B
Cabillo	Intramuros	7 D	Corrigidor	Tondo	13 H	Duque de Alba	Quiapo	5 C	Estero dela Peiza	Tondo	9 D
Calahe	Sampaloc	3 E	Craig	Sampaloc	4 M	Dunarty	Pandacan	3 B	Estero de San Miguel Quiapo		5 C
Calera (Ch)	Sta. Ana	3 H	Crisolita	Sta. Ana	5 H	Doctor Aloragan	Sta. Ana	7 F	Estero de San Miguel San Miguel		5 C
Calero	Sta. Cruz	5 C	Cristobal	Sampaloc	5 H	Doctor Papa	Tondo	14 F	Estero de Sampaloc	San Miguel	7 E
California	Paco	5 A	Cristina	Sampaloc	4 J	Donato Santiago	Sampaloc	10 G	Estero de San Lazaro	Sta. Cruz	3 E
	Ermita	7 E	Cristobal	Paco	6 B	Don Pedro	Sta. Ana	3 B	Estero de San Lazaro Binondo		6 I
Calocsa	Tondo	12 H	Cruzada	Quiapo	8 D	Don Quijote	Sampaloc	4 J	Estero de San Lazaro Tondo		13 D
Camarinas	Sta. Cruz	5 J	Cuartel	Malate	2 F	Donato Jose	Sta. Cruz	4 E	Estero de Santibanes	Paco	6 F
	Tondo	12 I		Ermita	4 C	Do Co	Paco	5 B	Estero de San Sebastian		
Cano	San Nicolas	4 C	Cuvas	Paco	6 C				Estero de Sta. Clara	Sta. Ana	8 G
Canonigo	Paco	7 C							Estero de San Agon	Tondo	9 X
Capitan Tioseg	Malate	5 C							Estero de Tripa Gallena	Sta. Ana	2 B
Carabang	Tondo	7 J							Estero de Tubaban	Tondo	11 D
Carago	Ermita	3 F							Estero de Uri-Uri	San Miguel	7 D
Carolina	Malate	4 D							Estero de Vitan	Tondo	8 L
Carpena	Quiapo	5 G	Dadiva	Binondo	3 I				Esmeralda (Ch)	Sta. Ana	4 D
Carriedo	Sta. Cruz	5 E	Dagonoy	Malate	7 C	Daingon	Sampaloc	2 G	Estrella	Sta. Cruz	5 C
Carvajal (Ch)	Binondo	4 F	Dagupan	Tondo	10 D	Dakota	Malate	6 H	Estremera	Sampaloc	5 H
Carpas	Sampaloc	5 E	Dakota	Tondo	5 D						
Carson	Sampaloc	5 H									
Castellano	Quiapo	5 B	Deitan	Sampaloc	3 L						
Castiblanco	Sampaloc	3 F	D. Aguil	Sampaloc	3 F						
Castro	Malate	6 C	Dandan	Tondo	8 H						
Cavite	Sta. Cruz	7 M	Dart	Paco	5 A						
	Tondo	7 H	Das Castillas	Malate	8 F						
Catalda	Ermita	1 E		Sampaloc	4 J						
Cebu	Sampaloc	10 I		Sta. Cruz	7 J						
Cecilio	Tondo	14 G	Declaracion	Binondo	7 F						
Celia	Paco	6 F	David	Ermita	8 F						
Central	Pandacan	6 D	Delas Alas	Sta. Ana	5 G						
Carraon	Ermita	4 E	Delpan	Sta. Ana	9 G						
Chavel	San Nicolas	4 H	D. Sagunto	Paco	7 E						
Chavaria	Binondo	3 F	Del Paso	Quiapo	4 L						
Chianterio	Sampaloc	7 F	Del Rosario	Tondo	9 D						
Chonille de Dios	Sampaloc	8 E	Del Carmen	Sampaloc	6 B						
Colangte	Ermita	3 I	Delos Reyes	Tondo	11 I						
Coltrano	Malate	6 O	De Santos	Tondo	8 M						
Comodion	Ermita	5 J	Daney Blvd.	Ermita	3 D						
Conce	Tondo	8 F		Malate	3 D						
Concha	Sta. Ana	2 B	Doir de Noyo	Tondo	12 H						
Condeza	Binondo	4 G	Doisado	Tondo	10 H						
Conrado Larra	Sampaloc	1 G	Dianante	Sta. Ana	5 G						
Construccion	Sampaloc	7 G	Dian	Sta. Ana	3 C						
Convento	Sta. Ana	3 B	Dikomo	Sta. Cruz	4 X						
Corral (Ch)	Tondo	8 F	Dilnuevo de Junco	Tondo	12 M						
Comandante	Sta. Cruz	5 C	Dillo Plaza								
Corporio	San Nicolas	5 I	Diosdado	Sampaloc	2 O						
Correalar	Sampaloc	13 G	Diosdado	Sta. Cruz	8 L						
			Diosdado	Tondo	14 M						

D

E

F

NAMES OF STREETS	DISTRICTS	LINES	NAMES OF STREETS	DISTRICTS	LINES	NAMES OF STREETS	DISTRICTS	LINES	NAMES OF STREETS	DISTRICTS	LINES
F. Roxas . . . . .	Sta. Ana	12 L	Hambur . . . . .	Tondo	10 O	Jaborosa . . . . .	San Nicolas	5 F	Lakndole . . . . .	Tondo	8 D
Fraternidad . . . . .	Quiapo	6 C	Havana . . . . .	Sta. Ana	9 H	Jesus . . . . .	Pandacan	7 E	La Liza . . . . .	Tondo	7 K
Fraternidad . . . . .	Pandacan	4 D	Harrison Blvd. . . . .	Paco	8 Q	Jamitan . . . . .	Sta. Ana	7 I	Lanigan . . . . .	Sta. Ana	10 I
Fuentes . . . . .	Sta. Ana	3 C		Malate	5 D	Jade . . . . .	Sta. Ana	4 F	Langit . . . . .	Sta. Cruz	7 I
Fullon . . . . .	Tondo	10 G		Malate	9 I	Jose Beza . . . . .	Tondo	10 G	Lacson Masa . . . . .	Tondo	10 J
Fundidor . . . . .	San Nicolas	6 H	Herbosa . . . . .	Tondo	4 A	J. Berlin . . . . .	Sempaloc	1 I	Laong Llan . . . . .	Sta. Cruz	7 H
Fifth (5th) St.	Intramuros	4 E	Helios . . . . .	Sta. Cruz	5 A	J. Bati . . . . .	Paco	6 D		San Nicolas	2 L
First (1st) St.	Intramuros	3 F	Herran . . . . .	Malate	4 R	J. de los Reyes . . . . .	Sempaloc	1 H	Lara . . . . .	San Nicolas	3 E
Fifteenth (15th)	Intramuros	4 C		Sta. Ana	7 H	J. de los Reyes . . . . .	Sempaloc	6 H	Larizabal . . . . .	Sempaloc	5 F
Fourth (4th)	Intramuros	3 F		Paco	9 A	J. Luidan (On)	Sempaloc	14 Q	La Torre . . . . .	Tondo	12 E
Fourteenth (14th)	Intramuros	4 O		Intramuros	7 D	José Syquia . . . . .	Tondo	8 H	Lavantero's . . . . .	Sempaloc	5 F
				Tondo	10 G	J. Taning . . . . .	Sta. Ana	2 I	Lavanteras . . . . .	San Nicolas	4 G
				Sta. Ana	6 H	Jose de Hernandez . . . . .	San Nicolas	1 J	Lanusca . . . . .	San Nicolas	1 D
				Quiapo	6 F	José Luis . . . . .	Sempaloc	11 L	Lealtad . . . . .	Sempaloc	5 I
				Sta. Ana	8 F		Tondo	9 F	Legarda . . . . .	Quiapo	9 F
				Sempaloc	10 F		San Nicolas	5 K		Sempaloc	2 A
				Pandacan	4 D	J. Saura . . . . .	Paco	7 C		San Miguel	7 E
				Sta. Cruz	5 H		Pandacan	3 B		Sta. Ana	9 H
				Sempaloc	7 H						
				Binondo	4 H						
Gebriela . . . . .	Tondo	10 G									
Gelecia . . . . .	Sempaloc	3 H									
Gellarza . . . . .	Sta. Ana	3 F									
Gamban . . . . .	Tondo	8 M									
Geardara . . . . .	Binondo	6 F									
	Sta. Cruz	2 C									
Gerang . . . . .	Tondo	9 M									
Gerrido Bxt. . . . .	Sta. Ana	8 F									
Gelinos . . . . .	Sta. Cruz	7 H									
George . . . . .	Malate	5 F									
Gerona . . . . .	Tondo	8 H									
Germinal . . . . .	Sta. Cruz	5 C									
Gerona, P. . . . .	Paco	4 G									
Globe de Oro . . . . .	Quiapo	7 G									
Gonzales . . . . .	Ermita	6 A									
Governor Forbes	Sempaloc	6 I									
	Sta. Cruz	7 I									
Granate . . . . .	Sta. Ana	5 E									
	Quiapo	4 G									
Granville . . . . .	Sta. Ana	4 G									
Gral. Geronimo . . . . .	Sempaloc	6 H									
Gral. Luna . . . . .	Paco	4 B									
	Ermita	6 G									
Gral. Lumban . . . . .	Tondo	10 L									
Gral. Solano . . . . .	San Miguel	4 E									
Gral. Trías . . . . .	Sempaloc	7 G									
Gray . . . . .	Ermita	4 E									
Guidote . . . . .	Tondo	8 H									
Gutierrez . . . . .	Paco	9 B									
G. Huesan . . . . .	Sempaloc	8 G									
Guijit . . . . .	Sempaloc	6 F									
Guzco . . . . .	Quiapo	4 C									

DECLASSIFIED  
 Authority 883078







DECLASSIFIED  
 Authority 883078

NAMES OF STUDENTS	DISTRICTS	LEGS
Vergara . . . . .	Quiapo . . .	7 C
V. Eguerra . . . .	Sta. Ana . .	3 D
Vermont . . . . .	Malate . . .	5 F
Veronica . . . . .	Binondo . . .	3 E
Villalobos . . . .	Sta. Cruz . .	5 A
Villaruel . . . . .	Tondo . . .	12 G
Vlasvas . . . . .	Sampaloc . .	10 I
Vitan . . . . .	Sampaloc . .	7 D
Vidal . . . . .	Ermita . . .	3 L
Victoria . . . . .	Intramuros .	8 D
Victoria Ext. . . .	Intramuros .	9 D
Vindia . . . . .	Sta. Cruz . .	7 K
Vita Cruz . . . . .	Malate . . .	6 A
	Sta. Ana . .	4 B
Vives . . . . .	San Nicolas .	1 E
V. Concepcion . . .	Sampaloc . .	1 J
Yongano . . . . .	Sta. Ana . .	3 E
Y. Mapa . . . . .	Sampaloc . .	15 D
Y. Mate . . . . .	Sampaloc . .	7 D

W

Washington . . . .	Sampaloc . .	4 M
Wright . . . . .	Malate . . .	5 F

Y

Yangco . . . . .	Tondo . . .	9 L
Ylaga . . . . .	Tondo . . .	9 D
	San Nicolas .	4 K
Ylang Ylang (CJ).	San Nicolas .	6 G
Younger . . . . .	Tondo . . .	8 H

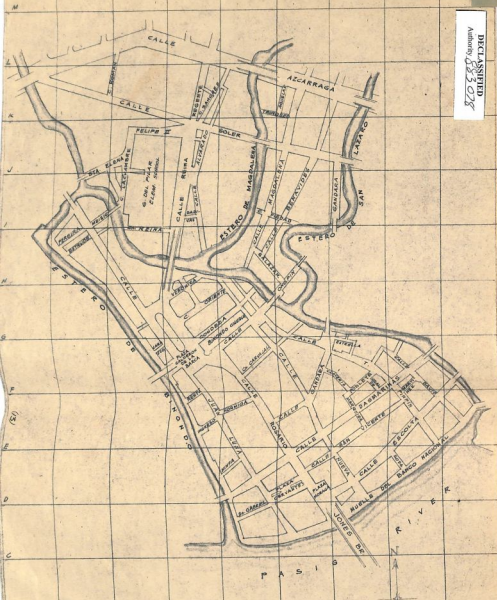
Z

Zacateros . . . . .	Sta. Cruz . .	3 C
Zamales . . . . .	Tondo . . .	12 N
Zacora . . . . .	Sta. Ana . .	8 G
Za. Ixi . . . . .	Sta. Ana . .	5 D
Zobel Rizos Ave.	Sta. Ana . .	4 B
Zobel . . . . .	Ermita . . .	5 I
Zalusta . . . . .	Paco . . .	6 G
Zarbanan . . . . .	Sta. Cruz . .	5 F

DECLASSIFIED  
Authority: 883 078



DISTRICT OF ERMITA  
CITY OF MANILA  
SCALE 1:10000



DISTRICT OF BINONDO  
CITY OF MANILA  
SCALE 1:5000



C

DECLASSIFIED

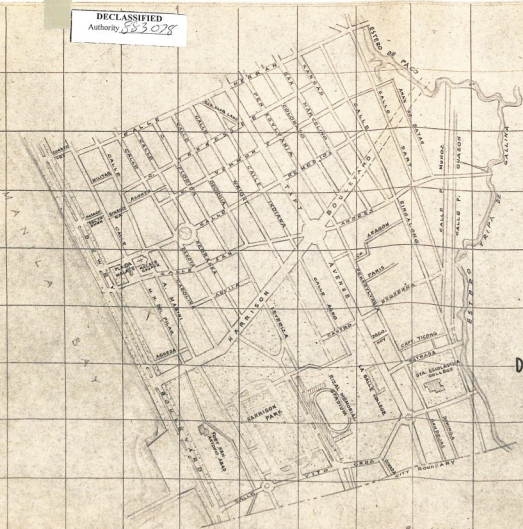
Authority 883 028



DISTRICT OF INTRAMUROS  
 AND SOUTH PORT DISTRICT  
 CITY OF MANILA  
 SCALE 1:10000

D

DECLASSIFIED  
 Authority 883078

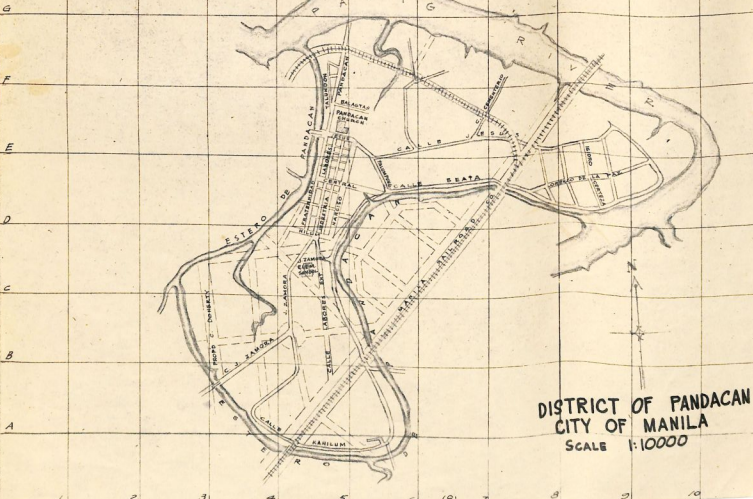


DISTRICT OF MALATE  
 CITY OF MANILA  
 SCALE 1:10000



F

DECLASSIFIED  
Authority *883 078*

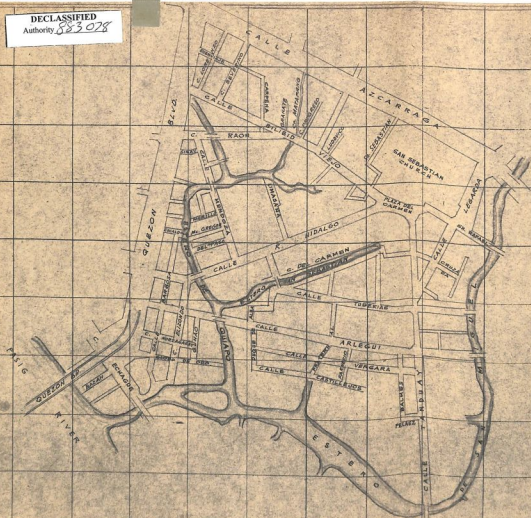


DISTRICT OF PANDACAN  
CITY OF MANILA  
SCALE 1:10000

G

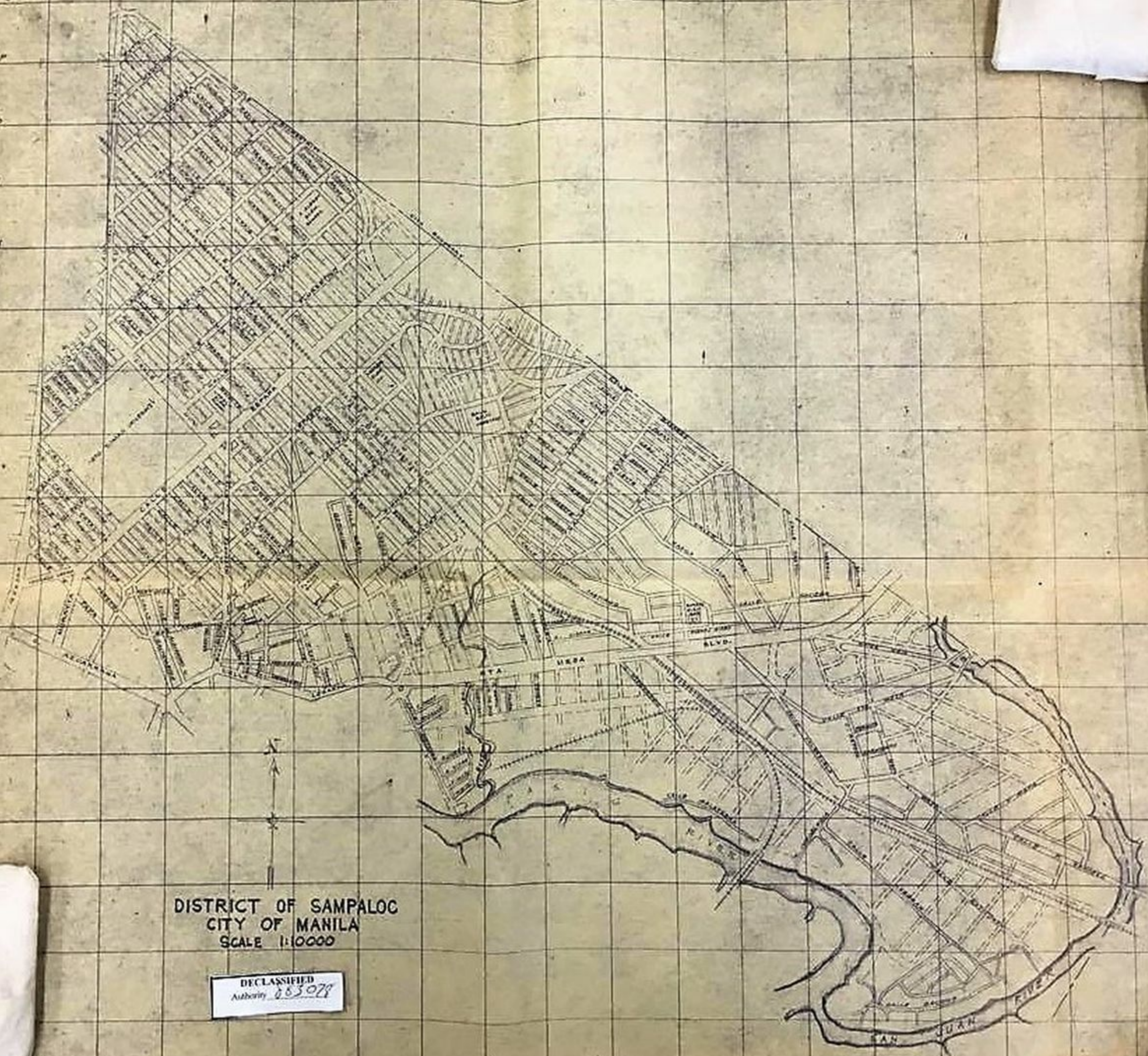
DECLASSIFIED  
Authority 883078

N  
G  
F  
E  
D  
C  
B  
A



DISTRICT OF QUIAPO  
CITY OF MANILA  
SCALE 1:5000





DISTRICT OF SAMPALOC  
CITY OF MANILA  
SCALE 1:10000

DECLASSIFIED  
Authority 083078

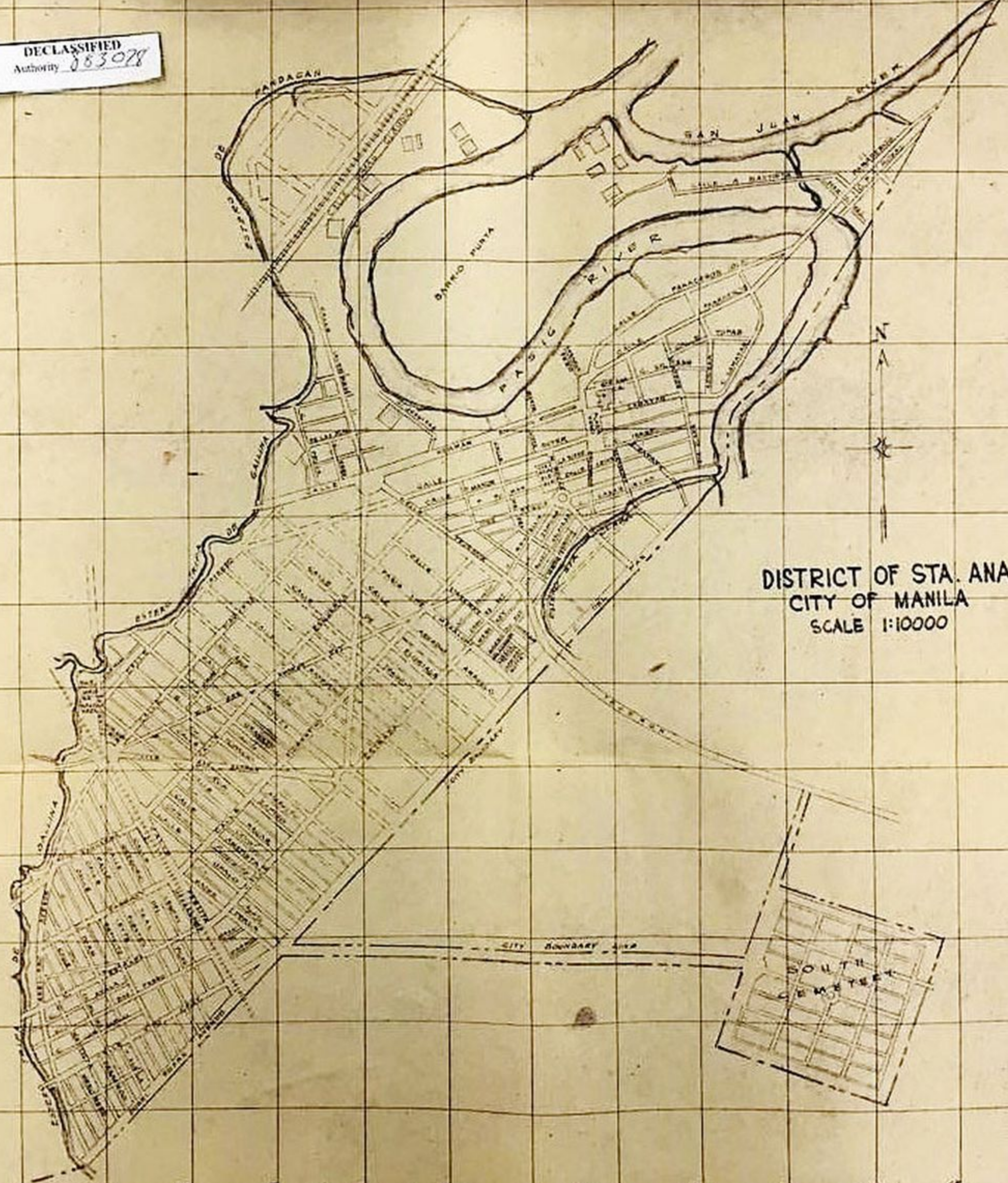








DECLASSIFIED  
Authority 883078

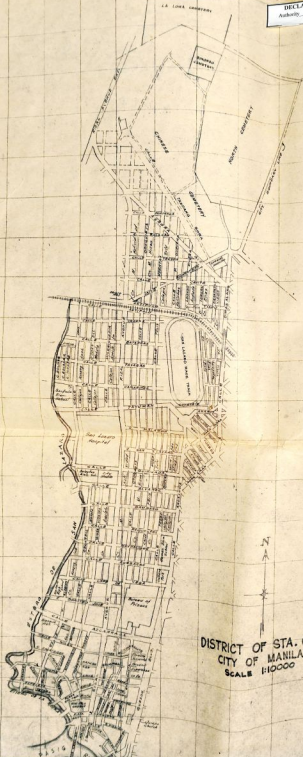


DISTRICT OF STA. ANA  
CITY OF MANILA  
SCALE 1:10000



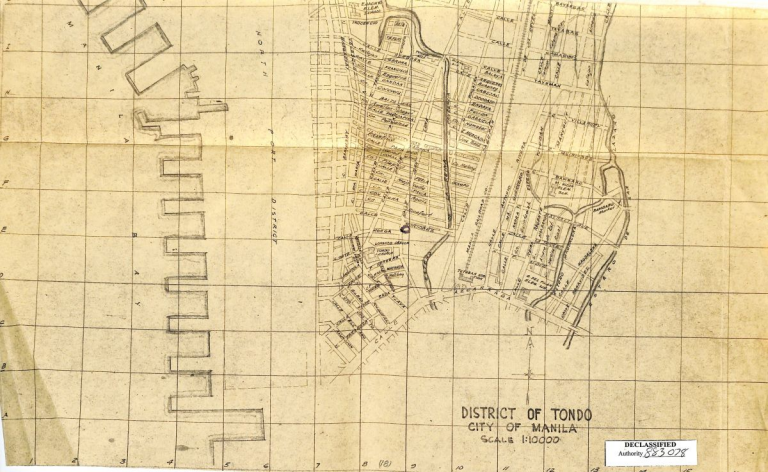


DECLASSIFIED  
Authority 88398



DISTRICT OF STA. CRUZ  
CITY OF MANILA  
SCALE 1:10000





NORTH  
PORT DISTRICT

DISTRICT OF TONDO  
CITY OF MANILA  
SCALE 1:10000

DECLASSIFIED  
Authority 883 078

M

DECLASSIFIED  
Authority 883028

Q  
P  
O  
N  
M  
L  
K  
J  
I

REFUGE  
SALW

CITY  
BOUNDARY



CN



DECLASSIFIED  
Authority: 503-225



DISTRICT OF TONDO  
CITY OF MANILA  
SCALE 1:10000