

File : 3607

Title : TERRAIN STUDY NO.94 CENTRAL LUZON VOL.2

Origin : ALLIED GEOGRAPHICAL SECTION

Dates : 18 OCT 1944

Authenticity : COPY No.2157

Source : SOUTHWEST PACIFIC AREA

EXCERPTED by No Date Microfilmed Date

SEARCHED (No PA #)

ALLIED GEOGRAPHICAL SECTION
SOUTHWEST PACIFIC AREA

TERRAIN STUDY No. 94

CENTRAL LUZON — VOLUME 2
(PHILIPPINE SERIES)

PHOTOGRAPHS

For Text and Maps see Volume 1

For Manila Directory see Volume 3

18 OCTOBER 1944

DECLASSIFIED

Authority: *AW 88307B*

6947
1944
18 OCT 1944

DECLASSIFIED

Authentic: *AWD 882078*

DECLASSIFIED

Authority: *AW 883075*

DECLASSIFIED

Authority: *NUJ 883078*

DECLASSIFIED

Authority: *AW/SS3078*

RESTRICTED

ALLIED GEOGRAPHICAL SECTION
SOUTHWEST PACIFIC AREA

TERRAIN STUDY No. 94

CENTRAL LUZON — VOLUME 2
(PHILIPPINE SERIES)

PHOTOGRAPHS

For Text and Maps see Volume 1

For Manila Directory see Volume 3

18 October, 1944

DECLASSIFIED

Authority *AWD 88307B*

General Headquarters,
Southwest Pacific Area,
18 October, 1944.

This Volume 2 of Terrain Study No 94 contains geographical information on the Central Luzon area, which is defined on the Orientation Map.

All available geographical information of value to staffs for operational and planning purposes has been collated and is incorporated herein.

The maps are intended to be used in conjunction with operational maps.

By command of General MacARTHUR.

R. K. SUTHERLAND,
Lieut-General, U.S.A.,
Chief of Staff.

Official:

C. A. WILLOUGHBY,
Brigadier General, G.S.C.,
Asst. Chief of Staff, G-2.

DECLASSIFIED

Authority: *AMDS 3078*

TERRAIN STUDY
ON
CENTRAL LUZON P.I.
Volume 2.

PHOTOGRAPHS

Volume 1. Text and Maps

Volume 3. Manila Directory

CONTENTS

1. Las Pinas Field—Manila. Looking east. 21 Sep 44.
2. Section of Manila Air Center. Looking east. 12 May 44.
3. Section of Manila Air Center. Looking east. 12 May 44.
4. Nichols Field—Manila. Looking east. 21 Sep 44.
5. Nichols Field—Manila. Looking north. 19 Jun 44.
6. Dewey Boulevard airstrip. Looking east. 21 Sep 44.
7. Neilson Field—Manila. Looking NE. 21 Sep 44.
8. Zablan Field—Manila. Looking NW. 16 Nov 39.
9. Dilliman site—Manila. Looking NE. Probably 1941.
10. Grace Park Field—N Manila. Looking SW. 21 Sep 44.
11. Balara Field—Rizal. Looking north. 24 Nov 39.
12. Mt Angelo Field—Rizal. Looking SE. 11 Mar 39.
13. Plaridel Field—Bulacan. Looking north. 11 Mar 39.
14. New Del Carmen Field (San Jose)—Pampanga. Looking south. 21 Sep 44.
15. Pre-war Del Carmen Field—Pampanga. Looking east. 21 Sep 44.
16. San Fernando Field—Pampanga. Looking west. 16 Dec 39.
17. Porac Field—Pampanga. Looking west. 21 Sep 44.
18. View showing the proposed Porac West airfield site. Looking NE. 21 Sep 44.
19. Angeles South (Lara) and Angeles South (Telebastagan) airfields—Pampanga. Looking east. 21 Sep 44.
20. Angeles South (Lara) Field—Pampanga. Looking south. 21 Sep 44.
21. Angeles West Field—Pampanga. Looking NNW. 21 Sep 44.
22. View showing Dau East, Angeles South (Telabastagan), Angeles West, Clark and Clark North Airfields. Looking west. 21 Sep 44.
23. View showing Clark, Clark North and Mabalacat West Airfields. Looking west. 21 Sep 44.
24. Clark Field runways 1B and 1C. Looking west. 21 Sep 44.
25. Clark North Field—Pampanga. Looking NE. 21 Sep 44.
26. View showing Mabalacat West, Mabalacat East, Clark North and Clark Airfields. Looking west. 21 Sep 44.
27. Mabalacat East Field—Pampanga. Looking east. 21 Sep 44.
28. View showing Bamban Airfield—Tarlac. Looking SE. 21 Sep 44.
29. Bamban Field—Tarlac. Looking SW. 21 Sep 44.
30. O'Donnell Emergency Landing Field—Tarlac. Looking west. 21 Sep 44.
31. O'Donnell Field—Tarlac. Looking NE. 12 May 44.
32. San Miguel Field—Tarlac. Looking SW. 6 Jan 44.
33. Tarlac Field—Tarlac. Looking north. 20 Feb 37.
34. Cabanatuan Field—Nueva Ecija. Looking north. 21 Sep 44.
35. Carranglan—Nueva Ecija. Looking NE. 12 Nov 25.
36. Cabuben and Bataan (Limay) Airfields—Bataan. Looking NE. 12 May 44.
37. Mariveles Field—Bataan. Vertical. 12 May 44.
38. San Marcelino Field—Zambales. Vertical. 12 May 44.
39. Santa Fe Landing Field—Zambales. Oblique 1931.
40. Biangue Landing Field—Zambales. Oblique 1931.

41. Iba Field—Zambales. Looking NNE. 5 Jan 39.
42. Acoje (Santa Cruz) Field—Zambales. Looking north. 20 Dec 37.
43. Route 1A between Pasay and Paranaque, near Manila. Two-lane, all-weather blacktop. 1934.
44. Manila, looking south in Calle Padre Burgos from GPO. 1941.
45. Manila, looking south along Dewey Blvd. from Calle Isaac Peral. 1938.
46. Pasig R. Manila, showing important R. bridges. 21 Sep 44.
47. Jones Bridge over Pasig R., Manila. River spans total about 325 ft. by 54 ft. wide. Looking east. Pre-war.
48. Sta. Cruz Bridge over Pasig R., Manila. River spans total about 315 ft. long by 40 ft. wide. Looking NE. Pre-war.
49. Ayala Bridge over Pasig R., Manila. River spans total about 447 ft. long by 60 ft. wide. Looking NW. Pre-war.
50. Quezon Bridge over Pasig R., Manila. River span, one 336 ft. arch, 65 ft. wide. Looking W. Aug 1940.
51. Aerial view of Tarlac, Tarlac Prov. Looking SW. 1938.
52. Route 3E near Fort Stotsenburg, Pampanga. Two-lane, all-weather, blacktop. Mar 1941.
53. Route 3D near San Fernando, Pampanga. Two-lane, all-weather, concrete surface. 1934.
54. Route 3B near Guiguinto, Bulacan. Two-lane, all-weather, blacktop. 1934.
55. View of San Fernando, Pampanga showing communications system. Jun 1940.
56. R.R. and auto bridges at Plaridel, Bulacan. Looking NW. Aug 1938.
57. R.R. and auto bridges at Meycauayan, Bulacan. Looking west. Pre-war.
58. Reinforced concrete single arch bridge on Route 3D near San Fernando, Pampanga. Looking north. Pre-war.
59. Old type steel truss bridge on Route 3B at Bigaa. Pre-war.
60. Combination steel truss and concrete slab bridge on Route 5E, Digidig, Nueva Ecija. Pre-war.
61. Single steel truss bridge, 195ft. x 16ft. x 30ft., on Route 5B over Tabuating R. near Sta. Rosa, Nueva Ecija. Pre-war.
62. Steel truss, 13 span bridge, 1989ft. x 16ft. x 26ft., on Route 5C over Pampanga R. near Cabanatuan, Nueva Ecija. Looking NW. 1938.
63. Coastal area of Zambales Prov. in vicinity of Sta. Cruz. Looking west. 12 May 44.
64. Coastal area of Zambales Prov. showing Acoje mine, airfield, and pier. Looking west. 12 May 44.
65. Aerial oblique of Zambales Coast at Masinloc. Looking west. 12 May 44.
66. Aerial oblique of Zambales Coast, Estolan Area. Looking west. 12 May 44.
67. Aerial oblique of Zambales West Coast Area between San Narcisco and Cabangsan. Looking west. 12 May 44.
68. Aerial oblique of Zambales West Coast Area at San Felipe. Looking west. 12 May 44.
69. Aerial oblique of San Marcelino area, South Zambales. Looking west. 12 May 44.
70. Aerial oblique of north end of Subic Bay, South Zambales. Looking west. 12 May 44.
71. Aerial vertical of Olongapo, Subic Bay area, South Zambales. 12 May 44.

72. Aerial vertical of Bagac area. West Central Bataan. 12 May 44.
73. Aerial oblique Bataan West Coast—Paysawan Bay. 12 May 44.
74. Aerial vertical of Mariveles Harbor area, South Bataan. 12 May 44.
75. Aerial oblique of SE Bataan, showing piers at Lamao and Cabachen, and the "Little Baguio" area. Looking NNE. 12 May 44.
76. Aerial oblique of East Central Bataan. Looking ENE. 12 May 44.
77. Aerial oblique of NE Bataan. Looking ENE. 12 May 44.
78. Route 7B between Olongapo, Zambales and Dinalupihan, Bataan. Under construction. One-lane, all weather. Pre-war.
79. Route 7B between Olongapo, Zambales, and Dinalupihan, Bataan. One-lane, all-weather, gravel surface, 1934.
80. Route 7B between Olongapo, Zambales and Dinalupihan, Bataan. One-lane, all-weather, gravel surface, 1934.
81. Two-span steel truss bridge on Route 7D over Cabangan River at Cabangan, Zambales Prov. Pre-war.
82. Reinforced concrete slab and girder, 266ft. x 20ft. x 15ft. on Route 7C over Kalaklan River looking SE toward Olongapo, Zambales. 1934. (End spans destroyed, and narrow bridge repairs in place, May 1944.)
83. Concrete multiple arch bridge on Route 21B at Darangan, Rizal. Looking west. 1927.
84. Combined vehicular and Manila electric tramline bridge over Pasig River on Route 21B near Pasig. Looking west. 1941.
85. Aerial oblique of Pasig, Rizal. Looking SW. Pre-war.
86. Engineer Island and Inner Basin—Manila.
87. North Harbor, Manila. Oct 1940.
88. Mariveles Harbor. Looking SE. Oct 1941.
89. Paysawan Bay—West Coast, Bataan. Looking North. 1939.
90. Olongapo—Naval and Seaplane Base. Oct 1941.
91. Yangco Pier—Olongapo. Looking east. 1934.
92. Iba Anchorage. Looking NW. 1936.
93. Port Masinloc. Looking West. 1937.
94. Acoje Pier, Santa Cruz, Zambales. 1937.

Transportation

95. *Pacific* Type Baldwin Locomotive. Built 1927. Wt 66 tons. Manila Railroad.
96. *Porter* Type Locomotive. Built 1919. Wt 63 tons.
97. *Mountain* Type American Locomotive. Built 1922. Wt 91 tons.
98. *Santa Fe* Type American Locomotive. Built 1932. Wt 94 tons.
99. *Mikado* Type Baldwin Locomotive. Built 1928. Wt 72 tons.
100. Motor Car and Trailers.
101. 6000-gallon Steel Tank Car.
102. Steel bottom Flat Car. 50 tons.
103. Steel 50-ton Box Car.
104. Wooden Third Class Passenger Coach.
105. Wooden First Class Passenger Coach.
106. Freight Yard—Tutuban Station.

107. Engine Shed—Caloocan, Manila.
108. 40-ton Steel Coal Car.
109. Bamban Bridge. Km. 92, Manila North Line.
110. Railroad Shops, Caloocan.
111. Provincial Bus and Bull Carts.
112. Motor Buses and Electric Cars. Manila Electric Co. 1941.
113. Plaza Miranda—showing native conveyance. 1939.
114. Carabao Cart—Juan Luna St., Manila.
115. Water Transportation Pasig River—Manila.
116. "Casco" on Manila estero.
117. Water transportation Pasig River—Manila.

Utilities

118. Manila Gas Co. Plant. 1939.
119. Manila Electric Steam Plant. 1939.
120. Typical Sub-station Meralco. 1940.
121. Meralco General Repair Shops. 1941.
122. Ipo Dam on Angat River. 1939.
123. Montalban Dam on Marikina River. 1933.
124. Balara Filters—Manila Water Supply. 1940.
125. Rizal Cement Plant, Binangonan, Rizal. Sept 44.
126. Tarlac Sugar Central (Central Azucarera de Tarlac), Tarlac. Looking NW. 1937.
127. Del Carmen Sugar Central (Pampanga Sugar Mills), Pampanga. Looking east. 1931.
128. Calumpit Sugar Central (Luzon Sugar Co.), Bulacan. Looking West. 1938.
129. Native method at squaring timber. Pre-war.
130. Flood area south of Arayat, Pampanga. Dec 1936.
131. Pampanga River, about 150 yds wide. Looking N.
132. Central Plain, Tarlac, North of Mt. Arayat, showing typical farming country. Looking south. Pre-war.
133. Rice Fields, Nueva Ecija, in dry season. Pre-war.
134. Rice Fields, Nueva Ecija, in planting season. Pre-war.
135. Central Plain, Tarlac. Looking NW from Camaling. Pre-war.
136. Vegetation on Caraballo Mts, Santa Fe, Nueva Viscaya. Pre-war.
137. Talahib grass, Santa Fe, Nueva Viscaya. Pre-war.
138. Balete Pass, Caraballo Mts. Looking SSE down valley leading to Talavera River. Pre-war.
139. Entrance to Pass over Sierra Madre (Range) on Bongabon-Baler Road. Looking ENE. Pre-war.
140. Looking east across the Marikina Valley to the foothills and southern portion of the Sierra Madre (Range). Pre-war.
141. New Bilibid Prison, Muntinglupa, Rizal. Lake Laguna de Bay in the background. Looking East. 1941.
142. San Simon, Pampanga, showing the Pampanga River. Looking South. 1923.

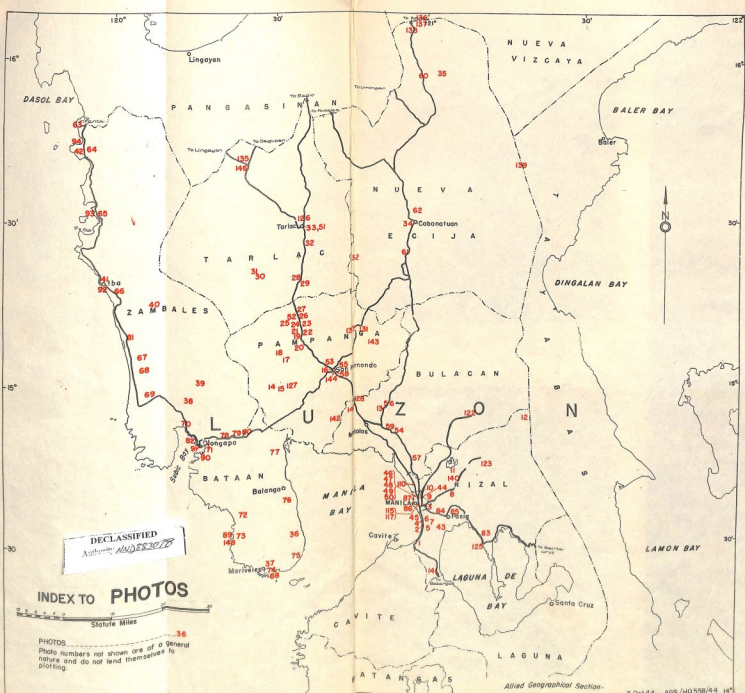
DECLASSIFIED

Authority: *AWD/SS307B*

143. Town of Candaba, Pampanga, showing Candaba Swamp in foreground. Looking SW. 1923.
144. San Fernando River, near the town of San Fernando, Pampanga, showing *cascos* (native lighters) used for transporting sugar cane. Pre-war.
145. Salt-water nipa swamp at high tide. 1924.
146. Town of Camiling, Tarlac. Looking west. 1930 (about).
147. Junction of the Pamipanga, Francisco, and Labangan Rivers. Looking SW. Aug 1938.
148. Landing beach area at Paysawan, Bataan Prov. Looking east. Pre-war.
149. Possible landing beach, Manila Bay area, five miles south of the city of Manila. Looking north. 1933.
150. Possible landing beach, Manila Bay area, five miles south of the city of Manila. (Same area as shown in photo 149.) 21 Sep 44.

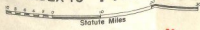
DECLASSIFIED

Authority *AW 883078*

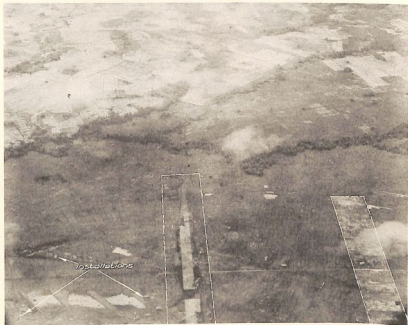


DECLASSIFIED
 Authority: *ANDERSON*

INDEX TO PHOTOS



PHOTOS 36
 Photo numbers not shown are of a general nature and do not lend themselves to plotting.



1. Las Pinas Field—Manila. Looking east. 21 Sep, '44.



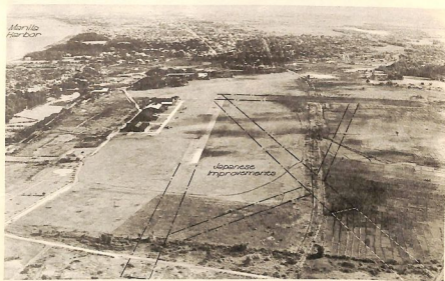
2. Section of Manila air center. Looking east. 12 May, '44.



3. Section of Manila air center. Looking east. 12 May, '44.



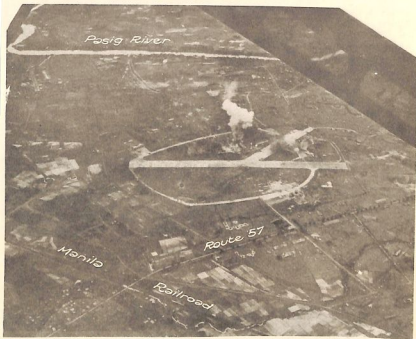
4. Nichols Field—Manila. Looking east. 21 Sep., '44.



5. Nichols Field—Manila. Looking north. 19 June, '44.



6. Dewey Boulevard airstrip. Looking east. 21 Sep., '44.



7. Neilson Field—Manila. Looking N.E. 21 Sep., '44.



8. Zablan Field—Manila. Looking N.W. 16 Nov., '39.



9. Diliman Site—Manila. Looking N.E. Probably 1941.



10. Grace Park Field—North Manila. Looking S.W. 21 Sep., '44.



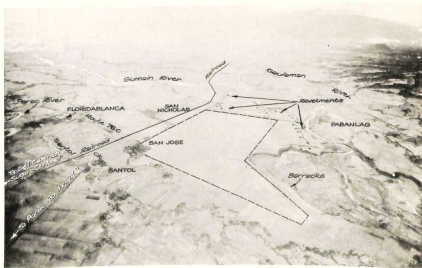
11. Balara Field—Rizal. Looking north. 24 Nov., '39.



12. Mt. Angelo Field—Rizal. Looking S.E. 11 Mar., '39.



13. Plaridel Field—Bulacan. Looking north. 11 Mar., '39.



14. New Del Carmen Field (San Jose)—Pampanga. Looking south. 21 Sep., '44.



15. Pre-war Del Carmen Field—Pampanga. Looking east. 21 Sep, '44.



16. San Fernando Field—Pampanga. Looking west. 16 Dec., '39.



17. Porac Field—Pampanga. Looking west. 21 Sep., '44.



18. View showing the proposed Porac West airfield site. Looking N.E. 21 Sep., '44.



19. Angeles South (Lara) and Angeles South (Telebastagan) Airfields—Pampanga. Looking east. 21 Sep., '44.



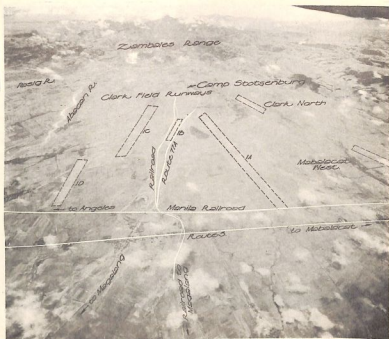
20. Angeles South (Lara) Field—Pampanga. Looking south. 21 Sep., '44.



21. Angeles West Field—Pampanga. 21 Sep., '44.



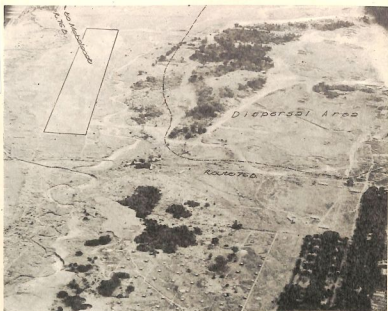
22. View showing Dau East, Angeles South (Telebastagan), Angeles West, Clark and Clark North Airfields. Looking west. 21 Sep., '44.



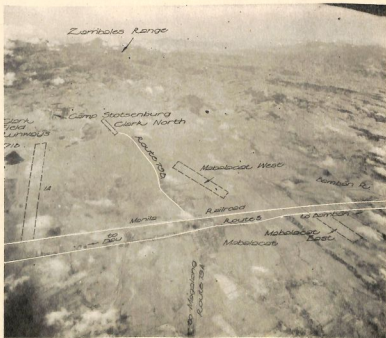
23. View showing Clark, Clark North and Mabalacat West Airfields. Looking west. 21 Sep., '44.



24. Clark Field, runways 1B and 1C. Looking west. 21 Sep., '44.



25. Clark North Field—Pampanga. Looking N.E. 21 Sep., '44.



26. View showing Mabalacat West, Mabalacat East, Clark North and Clark Airfields. Looking west. 21 Sep., '44.



27. Mabalacat East Field—Pampanga. Looking east. 21 Sep, '44.



28. View showing Bamban Airfield—Tarlac. Looking S.E. 21 Sep, '44.



29. Bamnan Field—Tarlac. Looking S.W. 21 Sep., '44.



30. O'Donnell Emergency Landing Field—Tarlac. Looking west. 21 Sep., '44.



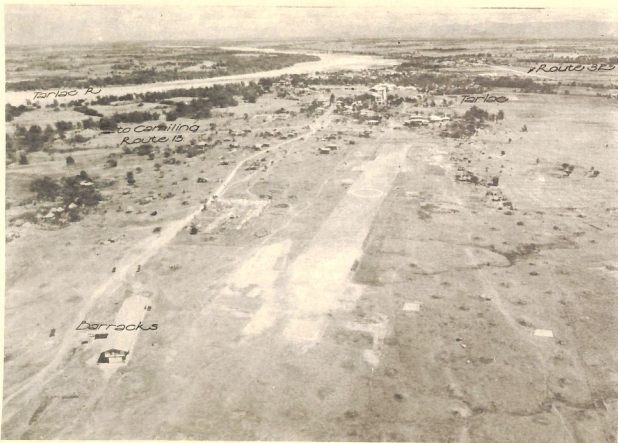
31. O'Donnell Field—Tarlac. Looking N.E. 12 May, '44.



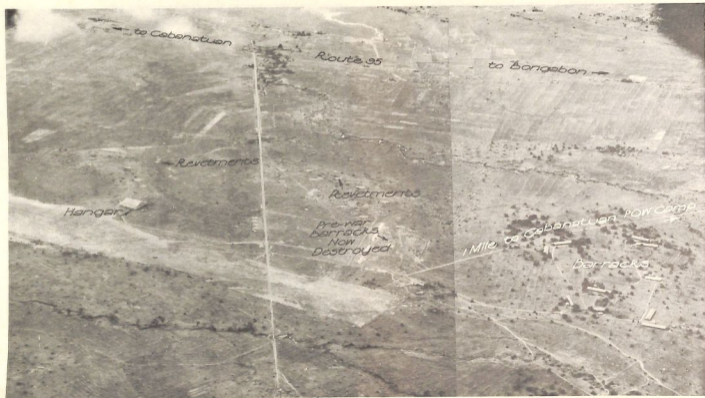
32. San Miguel Field—Tarlac. Looking S.W. 6 Jan., '44.

DECLASSIFIED

Authority: *AWD 883078*



33. Tarlac Field—Tarlac. Looking north. 20 Feb., '37.



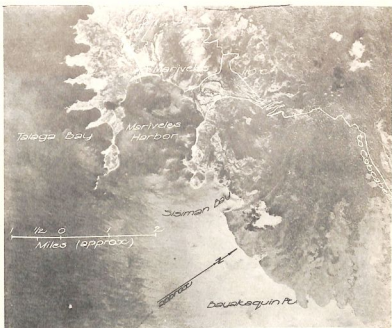
34. Cabanatuan Field—Nueva Ecija. Looking north. 21 Sep., '44.



35. Carranglan—Nueva Ecija. Looking N.E. 12 Nov., '25.



36. Cabcaben and Bataan (Limay) Airfields—Bataan. Looking N.E. 12 May, '44.



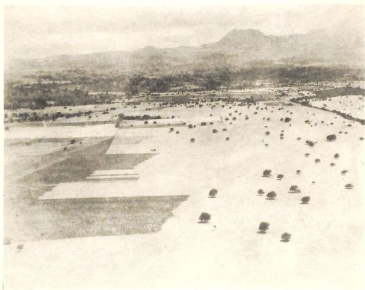
37. Mariveles Field—Bataan. Vertical. 12 May, '44.



38. San Marcelino Field—Zambales. Vertical. 12 May, '44.



39. Santa Fe Landing Field—Zambales. Oblique. 1931.



40. Biangue Landing Field—Zambales. Oblique. 1931.



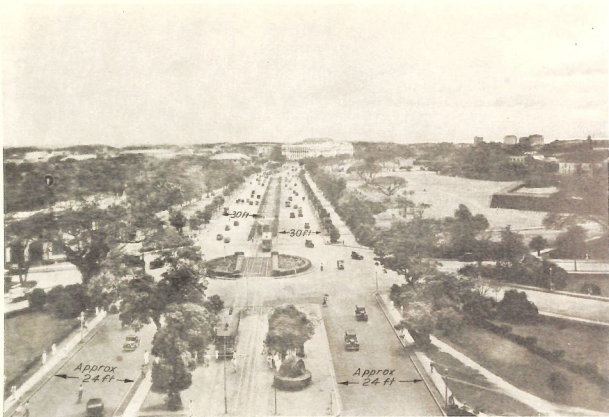
41. Iba Field—Zambales. Looking N.N.E. 5 Jan., '39.



42. Acoje (Santa Cruz) Field—Zambales. Looking north. 20 Dec., '37.



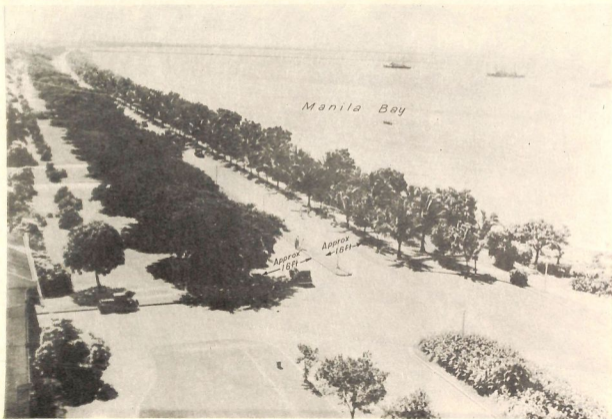
43. Route 1A between Pasay and Paranaque, near Manila. Two-lane, all weather blacktop. 1934.



44. Manila, looking south in Calle Padre Burgos from G.P.O. 1941.

DECLASSIFIED

Authority: *NAVJSS3078*



45. Manila, looking south along Dewey Blvd. from Calle Issac Peral. 1938.



46. Pasig R., Manila, showing important R. bridges. 21 Sep., '44.



47. Jones Bridge over Pasig R., Manila. River spans total about 325 ft. by 54 ft. wide. Looking east. Pre-war.



48. Sta. Cruz Bridge over Pasig R., Manila. River spans total about 315 ft. long by 40 ft. wide. Looking N.E. Pre-war.



49. Ayala Bridge over Pasig R., Manila. River spans total about 447 ft. long by 60 ft. wide. Looking N.W. Pre-war.



47. Jones Bridge over Pasig R., Manila. River spans total about 325 ft. by 54 ft. wide. Looking east. Pre-war.



48. Sta. Cruz Bridge over Pasig R., Manila. River spans total about 315 ft. long by 40 ft. wide. Looking N.E. Pre-war.



49. Ayala Bridge over Pasig R., Manila. River spans total about 447 ft. long by 60 ft. wide. Looking N.W. Pre-war.



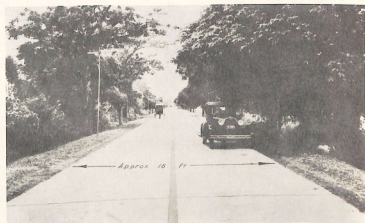
50. Quezon Bridge over Pasig R., Manila. River span, one 336 ft. arch, 65 ft. wide. Looking west. Aug., 1940.



51. Aerial view of Tarlac, Tarlac Prov. Looking S.W. 1938.



52. Route 3E near Fort Stotsenburg, Pampanga. Two-lane, all weather, black top. Mar., 1944.



53. Route 3D near San Fernando, Pampanga. Two-lane, all-weather, concrete surface. 1934.



54. Route 3B near Guiguinto, Bulacan. Two-lane, all-weather, blacktop. 1934.



55. View of San Fernando, Pampanga, showing communications system. June, 1940.



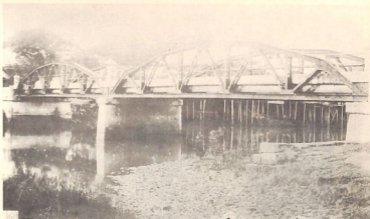
56. R.R. and auto bridges at Plaridel, Bulacan. Looking N.W. Aug., 1938.



57. R.R. and auto bridges at Meycauayan, Bulacan. Looking west. Pre-war.



58. Reinforced concrete single arch bridge on Route 3D near San Fernando, Pampanga. Looking north. Pre-war.



59. Old type steel truss bridge on Route 3B at Bigaa. Pre-war.



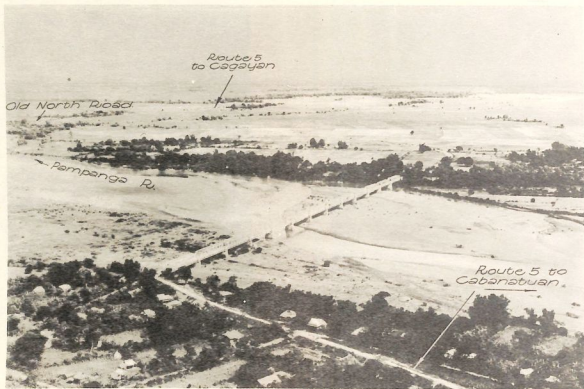
60. Combination steel truss and concrete slab bridge on Route 5E, Digidig, Nueva Ecija. Pre-war.



61. Single steel truss bridge, 195' x 16' x 30', on Route 5B over Tabuating R. near Sta. Rosa, Nueva Ecija. Pre-war.

DECLASSIFIED

Authority *NAVJSS307B*



62. Steel truss, 13 span bridge, 1989' x 16' x 26', on Route 5C over Pampanga R. near Cabanatuan, Nueva Ecija. Looking N.W. 1938.



63. Coastal area of Zambales Prov. in vicinity of Sta. Cruz. Looking west. 12 May, '44.



64. Coastal area of Zambales Prov. showing Acoje mine, airfield, and pier. Looking west. 12 May, '44.



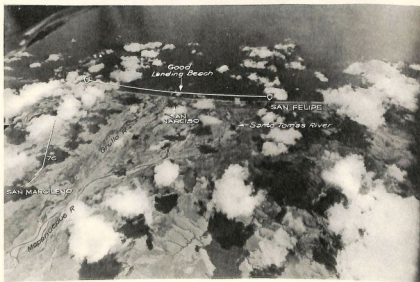
65. Aerial oblique of Zambales Coast, Masinloc Area. Looking west. 12 May 44.



66. Aerial oblique of Zambales Coast, Batolan Area. Looking west. 12 May 44.



67. Aerial oblique of Zambales west coast area between San Narciso and Cabangan. Looking west. 12 May 44.



68. Aerial oblique of Zambales west coast area at San Felipe. Looking west. 12 May 44.



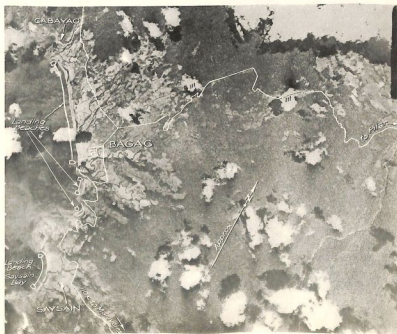
69. Aerial oblique of San Marcelino area, South Zambales. Looking west. 12 May 44.



70. Aerial oblique of north end of Subic Bay South Zambales. Looking west. 12 May 44.



71. Aerial vertical of Olongapo, Subic Bay area, South Zambales. 12 May 44.



72. Aerial vertical of Bagac area, West Central Bataan. 12 May 44.



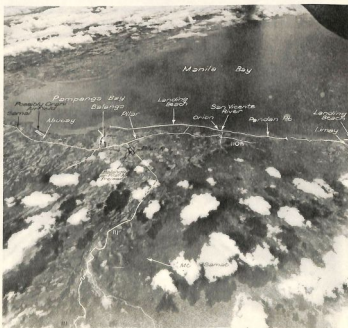
73. Aerial oblique Bataan West Coast--Paysawan Bay. 12 May 44.



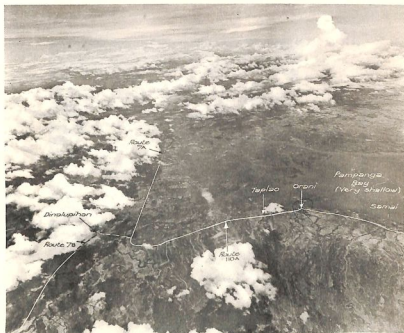
74. Aerial vertical of Mariveles Harbor area south Bataan. 12 May 44.



75. Aerial oblique of SE Bataan, showing piers at Lamao and Cabacben, and the "Little Baguio" area. Looking NNE. 12 May 44.



76. Aerial oblique of East Central Bataan. Looking ENE. 12 May 44.



77. Aerial oblique of NE Bataan. Looking ENE. 12 May 44.



78. Route 7B between Olongapo (Zambales) and Dinalupihan (Bataan) under construction. One-lane, all weather. Pre-war.

DECLASSIFIED

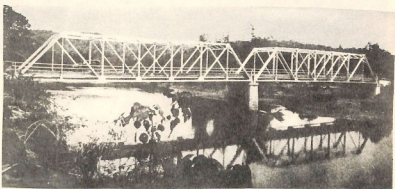
Authority: *AWD 883078*



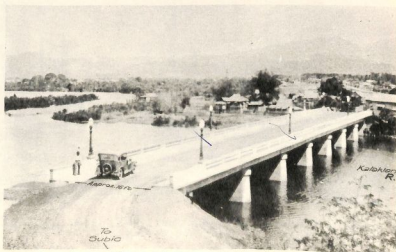
79. Route 7B between Olongapo (Zambales) and Dinalupihan (Bataan). One-lane all-weather, gravel surface. 1934.



80. Route 7B between Olongapo (Zambales) and Dinalupihan (Bataan). One-lane, all-weather, gravel surface. 1934.



81. Two-span steel truss bridge on Route 7D over the Cabangon R, at Cabangon, Zambales Prov. Pre-war.



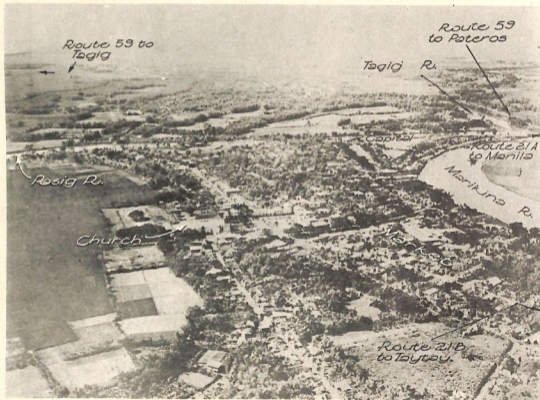
82. Reinforced concrete slab and girder. $226 \times 20 \times 15$ on Route 7C over Kalaklan River looking SE towards Olongapo (Zambales). 1934.
(End spans destroyed, and narrow bridge repairs in place. May 1944).



83. Concrete multiple arch bridge on Route 21B at Darangan, Rizal. Looking west. 1927.



84. Combined vehicular and Manila Electric tramline bridge over Pasig River on Route 21B near Pasig. Looking west. 1941.



85. Aerial oblique of Pasig, Rizal, looking SW. Pre-war.



86. Engineer Island and Inner Basin—Manila.

DECLASSIFIED

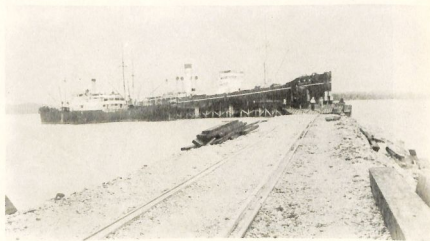
Authority: *AWD 883078*



87. North Harbor, Manila. Oct 40.



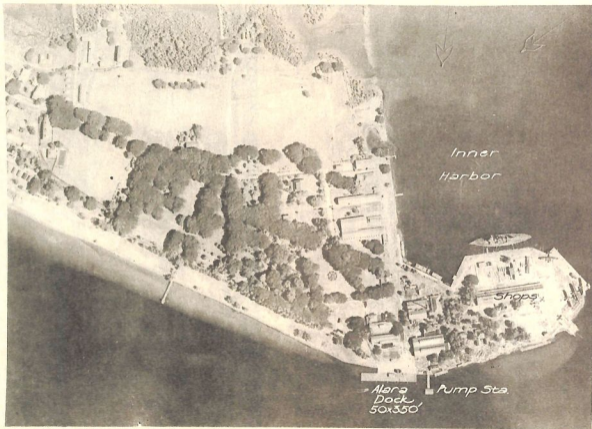
88. Mariveles Harbor. Looking SE. Oct 1941.



89. Paysawan Bay—West Coast, Bataan, 1939. Bataan. Looking north. 1939.

DECLASSIFIED

Authority: *NAVJSS3075*



90. Olongapo—Naval and Seaplane Base. Oct 1941.



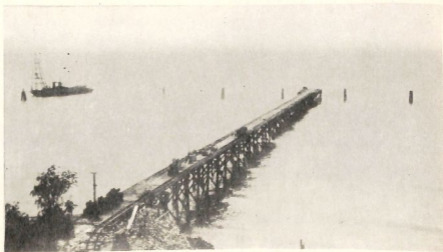
91. Yangco Pier—Olongapo. Looking east. 1934.



92. Iba Anchorage. Looking NW. 1936.



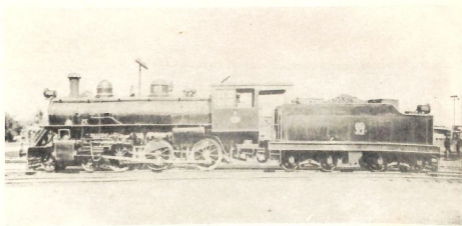
93. Port Masinloc. Looking west. 1937.



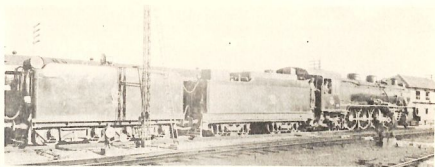
94. Acoje Pier, Santa Cruz, Zambales. 1937.



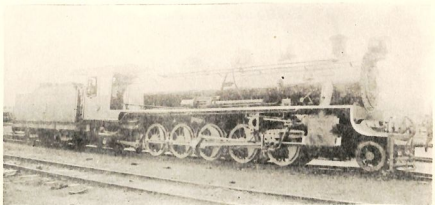
95. "Pacific" Type Baldwin Locomotive—Built 1927—Wt 66 tons—Manila Railroad.



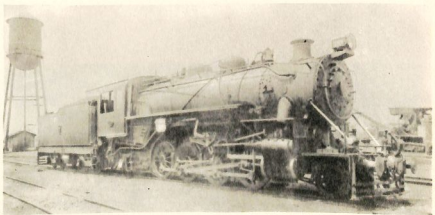
96. "Porter" Type Locomotive—Built 1919—Wt 45 tons.



97. "Mountain" Type American Locomotive—Built 1922—Wt 91 tons.



98. "Sante Fe" Type American Locomotive—Built 1922—Wt 94 tons.



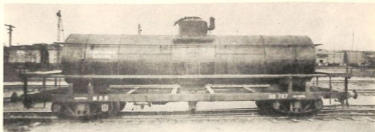
99. "Mikado" Type Baldwin Locomotive—Built 1928—Wt. 72 tons.

DECLASSIFIED

Authentic: *Abd* 8830728



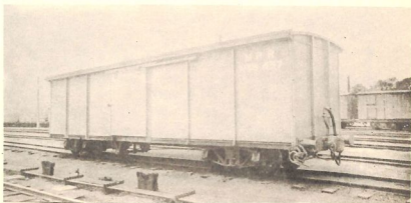
100. Motor Car and Trailers, Manila R.R. Co.



101. 6000 gallon-steel Tank Car, Manila R.R. Co.



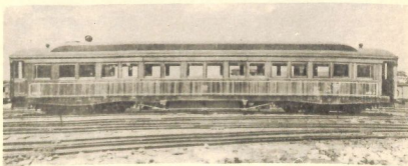
102. Steel bottom Flat Car, 30 tons, Manila R.R. Co.



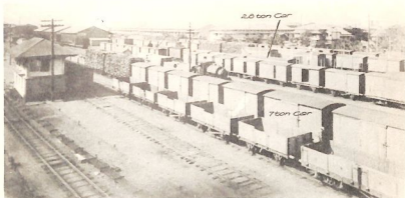
103. Steel 30 ton capacity Box Car, Manila R.R. Co.



104. Steel third class Passenger Coach, Manila R.R. Co.



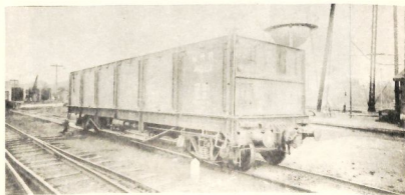
105. Wooden first class Passenger Coach, Manila R.R. Co.



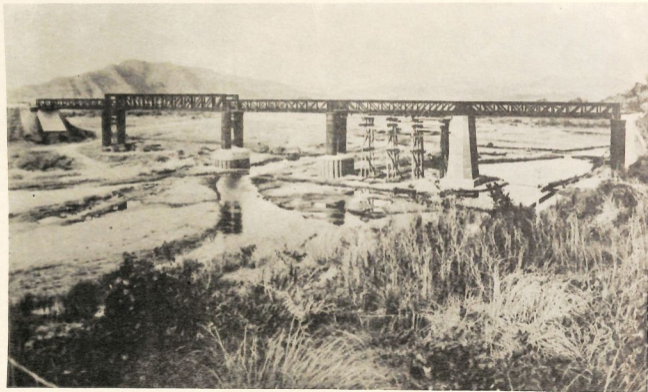
106. Freight Yard—Tutuban Station, Manila.



107. Engine shed—Caloocan, Manila.



108. 40 ton capacity Steel Coal Car, Manila R.R. Co.



109. Bamban R.R. Bridge, km 92, Manila North Line.



110. Railroad Shops, Caloocan, Manila.



111. Typical provincial Bus and Bull cart.



112. Motor Buses and Electric Cars—Manila Electric Co.—1941



113. Plaza Miranda, Manila—showing native conveyance. 1939.



114. Carabao Cart—Juan Luna St., Manila.



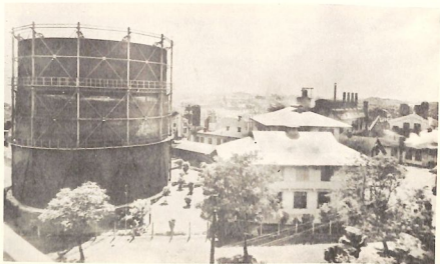
115. Water Transportation, Pasig River—Manila.



116. "Casco" on Manila estero.



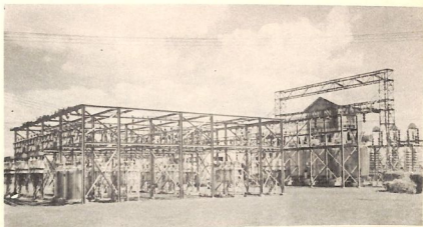
117. Water Transportation, Pasig River—Manila.



118. Manila Gas Co. Plant. 1939.



119. Manila Electric Steam Plant. 1939.



120. Typical sub-station of Meralco. 1940.



121. Meralco General Repair shops. 1941.



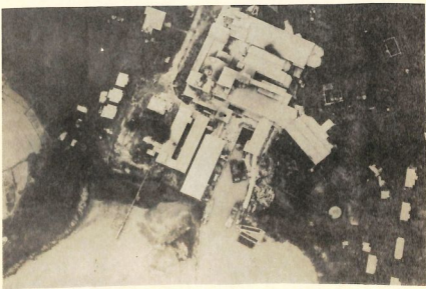
122. Ipo Dam on Angat River, 1939.



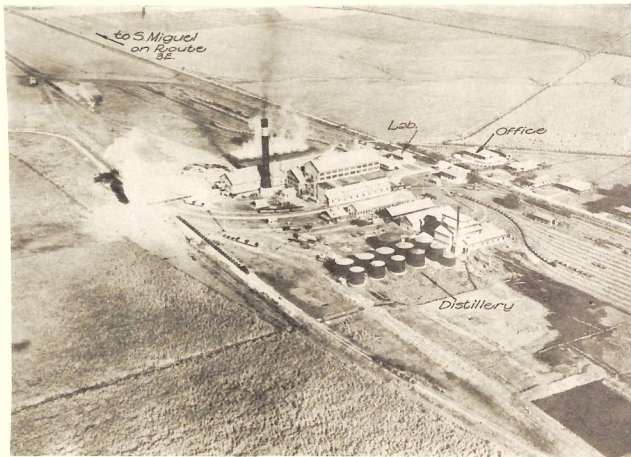
123. Montalban Dam on Marikina River. 1933.



124. Balara Filters—Manila Water Supply. 1940.



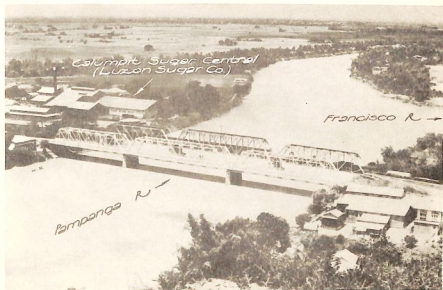
125. Rizal Cement Plant, Binangonan, Rizal. Sep., '44.



126. Tarlac Sugar Central (Central Azucarera de Tarlac) Tarlac. Looking NW. 1937



127. Del Carmen Sugar Central (Pampanga Sugar Mills), Pampanga. Looking east. 1931.



128. Calumpit Sugar Central (Luzon Sugar Co) Bulacan. Looking west. 1938.



129. Native method of squaring timber. Pre-war.



130. Flooded area south of Arayat, Pampanga. Dec 1936.



Mc Arayat 3564

131. Pampanga R, about 150 yds wide. Looking north.

Mt. Arayat 3564



132. Central Plain, Tarlac, north of Mt Arayat, showing typical farming country. Looking south. Pre-war.

*Cordillera Central
(Caraballo Mts.)*



133. Rice fields, Nueva Ecija, in dry season. Pre-war.



134. Rice fields, Nueva Ecija, in planting season. Pre-war.



135. Central Plain, Tarlac, looking NW from Camaling. Pre-war.



136. Vegetation on Caraballo Mts, Santa Fe, Nueva Viscaya. Pre-war.



137. Talahib grass, Santa Fe, Nueva Viscaya. Pre-war.



138. Balete Pass, Caraballo Mts. Looking SSE down valley leading to Talavera R. Pre-war.



139. Entrance to pass over Sierra Madres range on Bongabon-Baler road. Looking ENE. Pre-war.



140. Looking east across the Marikina Valley to the foothills and southern portion of the Sierra Madres range. Pre-war.



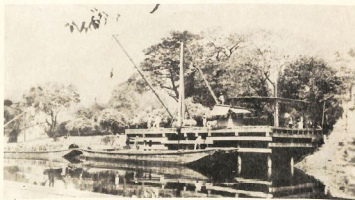
141. New Bilibid Prison, Muntinlupa, Rizal. Lake Laguna de Bay in the background. Looking east. 1941.



142. San Simon, Pampanga, showing the Pampanga R. Looking south. 1923.



143. Town of Candaba, Pampanga, showing Candaba swamp in foreground. Looking SW. 1923.



144. San Fernando R, near the town of San Fernando, Pampanga, showing cascos (native lighters) used for transporting sugar cane. Pre-war.



145. Salt-water nipa swamp at high tide. 1924.



146. Town of Camiling, Tarlac. Looking west. 1930 (about).



147. Junction of the Pampanga, Francisco, and Labangan Rivers. Looking SW. Aug 1938.



148. Landing beach area at Paysawan, Bataan Prov. Looking east. Pre-war.



149. Possible landing beach, Manila Bay area, five miles south of the city of Manila. Looking north. 1933.

DECLASSIFIED

Authority: *NW 883078*



THE CAMPUS
LAWRENCE UNIVERSITY



1900. Possible looking back. Shows the area for miles north of the site of Mexico. (Note: 1900 is shown in photo of 1901. 17 Aug. 02)

DECLASSIFIED

Authority *AWDSS3078*

DECLASSIFIED

Authority: *AWD 583078*

DECLASSIFIED

Authority: *NUJ 883078*

DECLASSIFIED

Authority: *AWD 883078*

CENTRAL LIZON — VOLUME 2 (Philippine Series)

TERRAIN STUDY No. 94

DECLASSIFIED

Authority: *AMDS 3078*